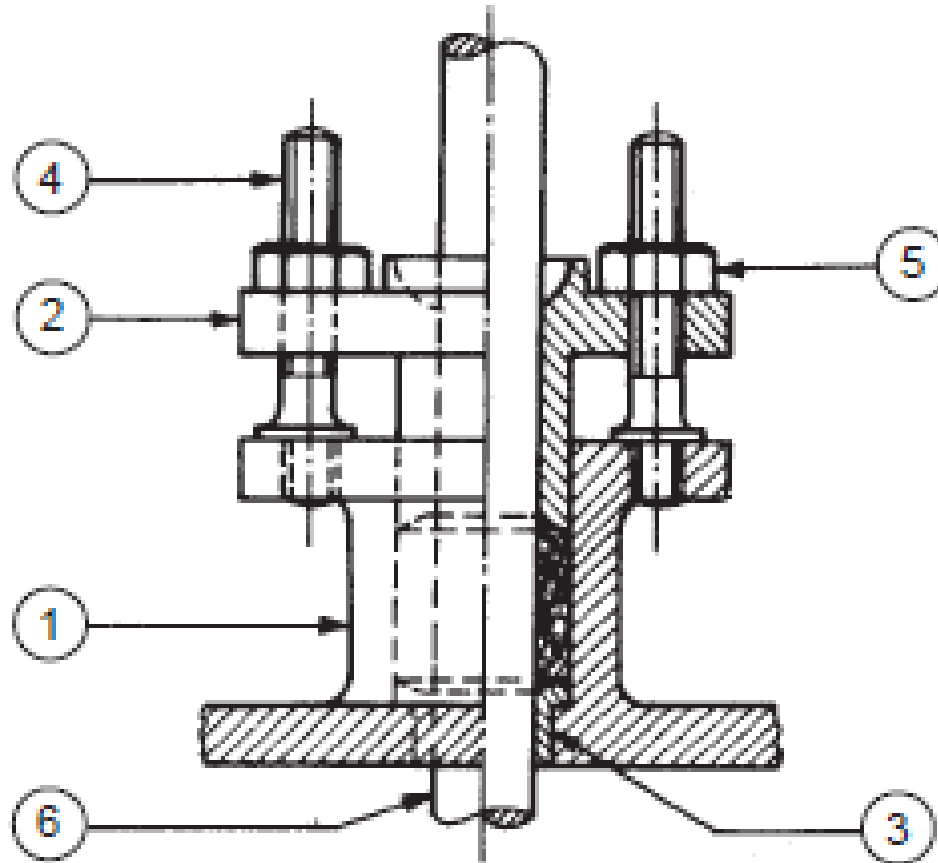


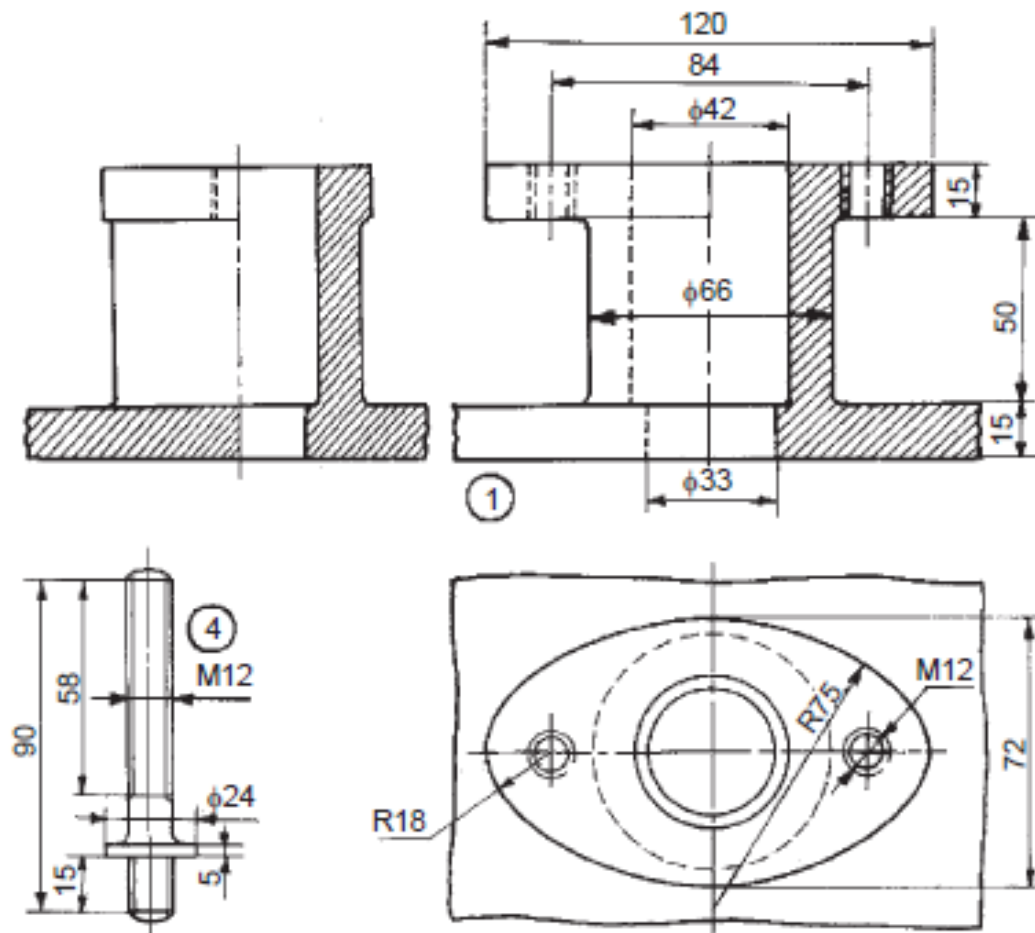
Section D

Assembly drawing with sectioning and bill of materials from given detailed drawings of assemblies: Steam stop valve, Stuffing box, Drill jigs and Milling fixture.

Assembly of Stuffing box



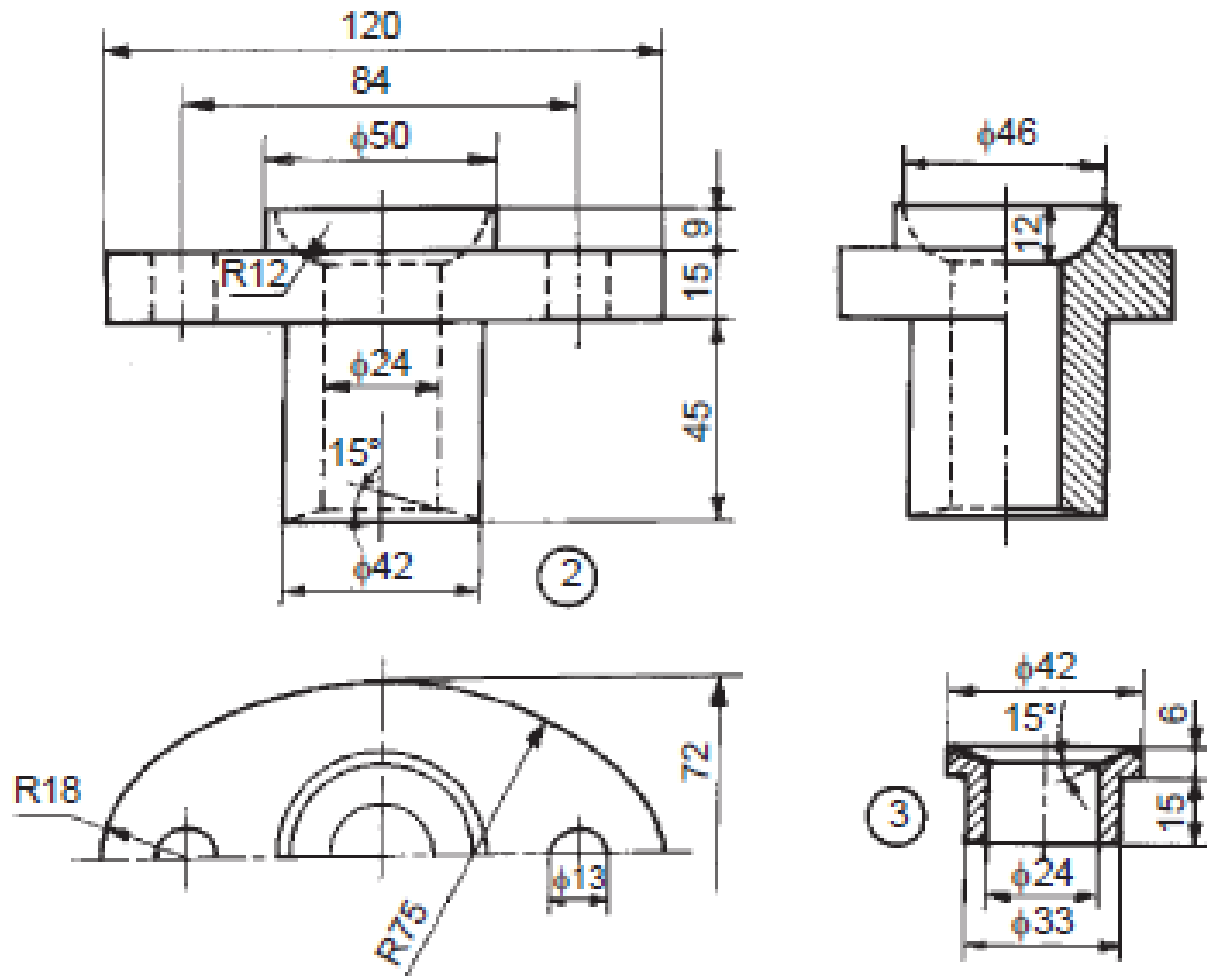
Details of Stuffing box



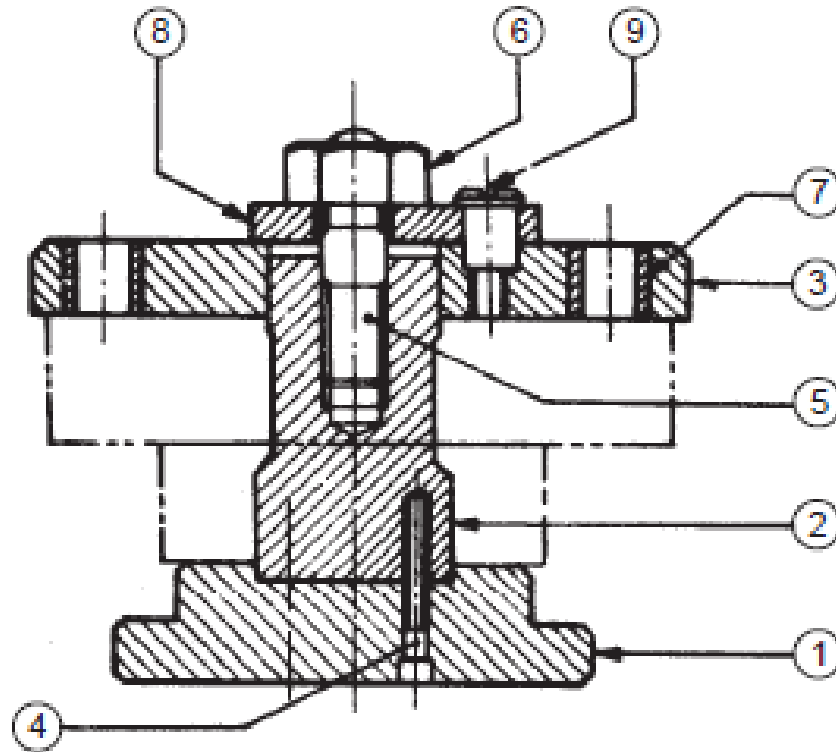
Parts list

Part No.	Name	Matl	Qty
1	Body	CI	1
2	Gland	Brass	1
3	Bush	Brass	1
4	Stud	MS	2
5	Nut, M12	MS	2

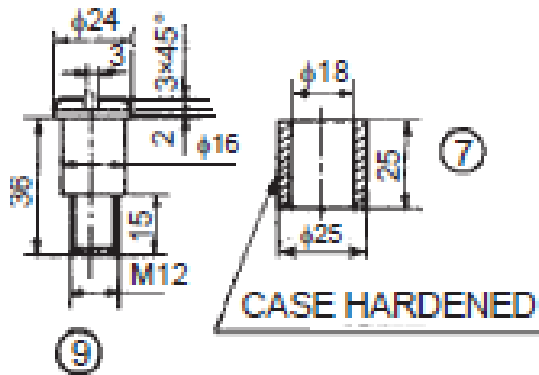
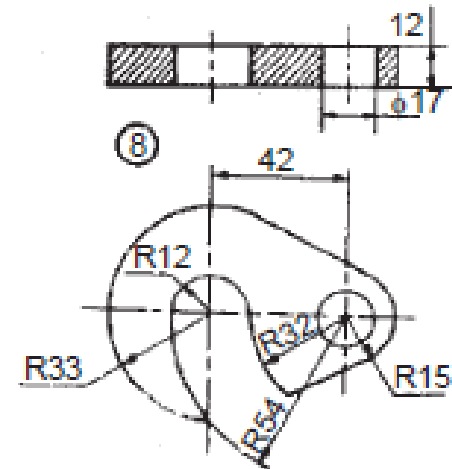
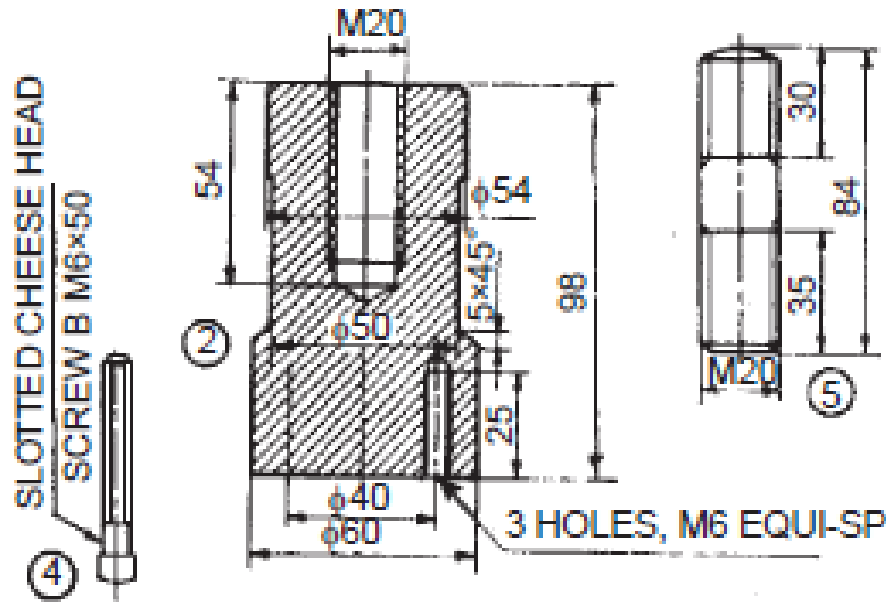
Details of Stuffing box



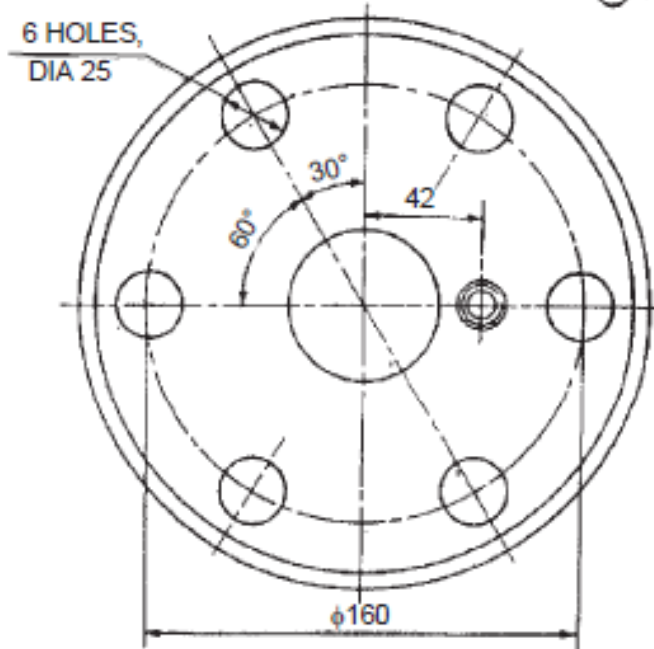
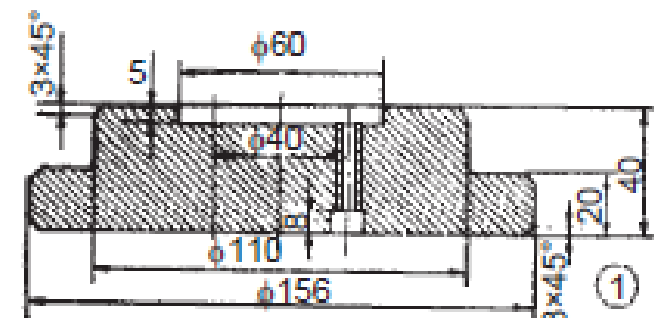
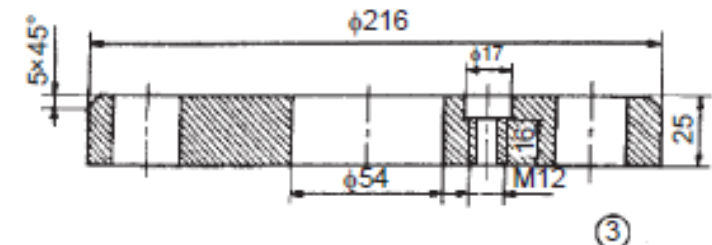
Assembly of Drill jigs



Details of Drill jigs



Details of Drill jigs



Parts list

Part No.	Name	Matl	Qty
1	Base plate	CI	1
2	Stem	MS	1
3	Jig plate	CI	1
4	Screw	MS	3
5	Stud	MS	1
6	Nut M20	MS	1
7	Bush case hardened	Steel	6
8	Latch washer	MS	1
9	Screw	MS	1

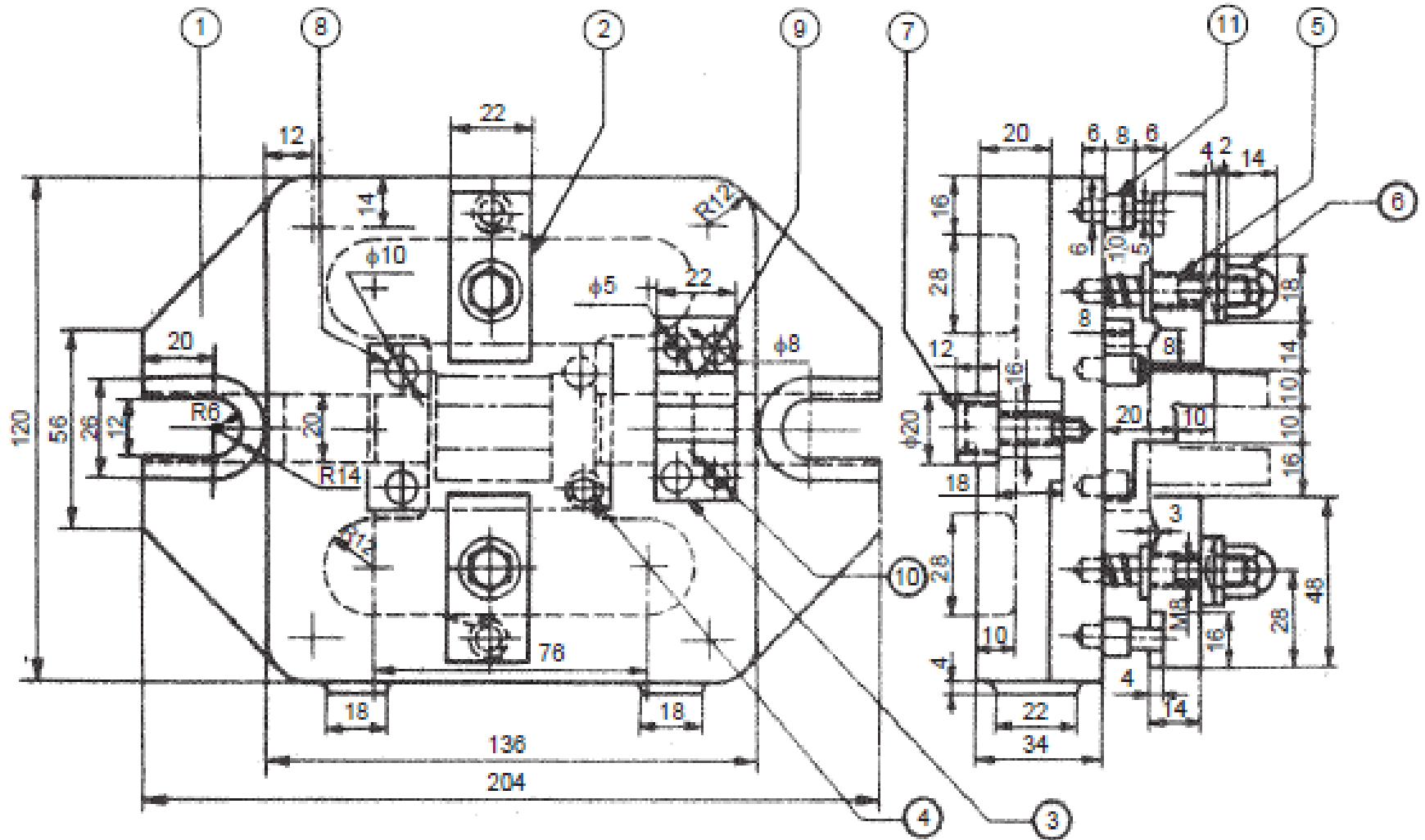
Assembly of Milling Fixture



Parts list

Part No.	Name	Matl.	Qty.	Part No.	Name	Matl.	Qty.
1	Fixture base	CI	1	7	Tenon	HCS	2
2	Clamp	MS	2	8	Locating pin	HCS	2
3	Setting block	MS	1	9	Locating pin	HCS	2
4	Flattened location pin	HCS	1	10	Dowel pin	HCS	2
5	Clamping screw with spring	MS	2	11	Guide pin	HCS	2
6	Clamping nut	MS	2				

Assembly of Milling fixture



Turning fixture

