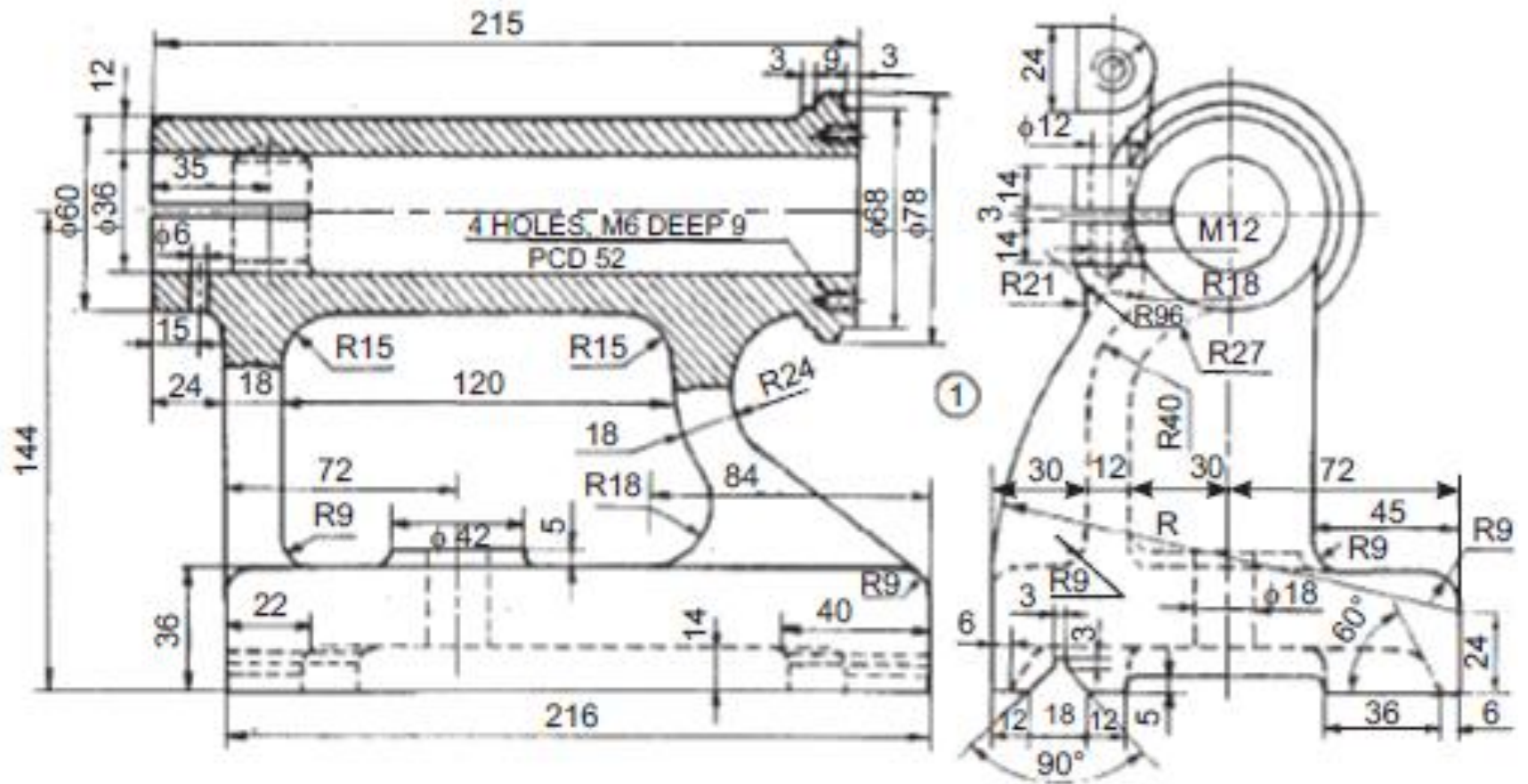


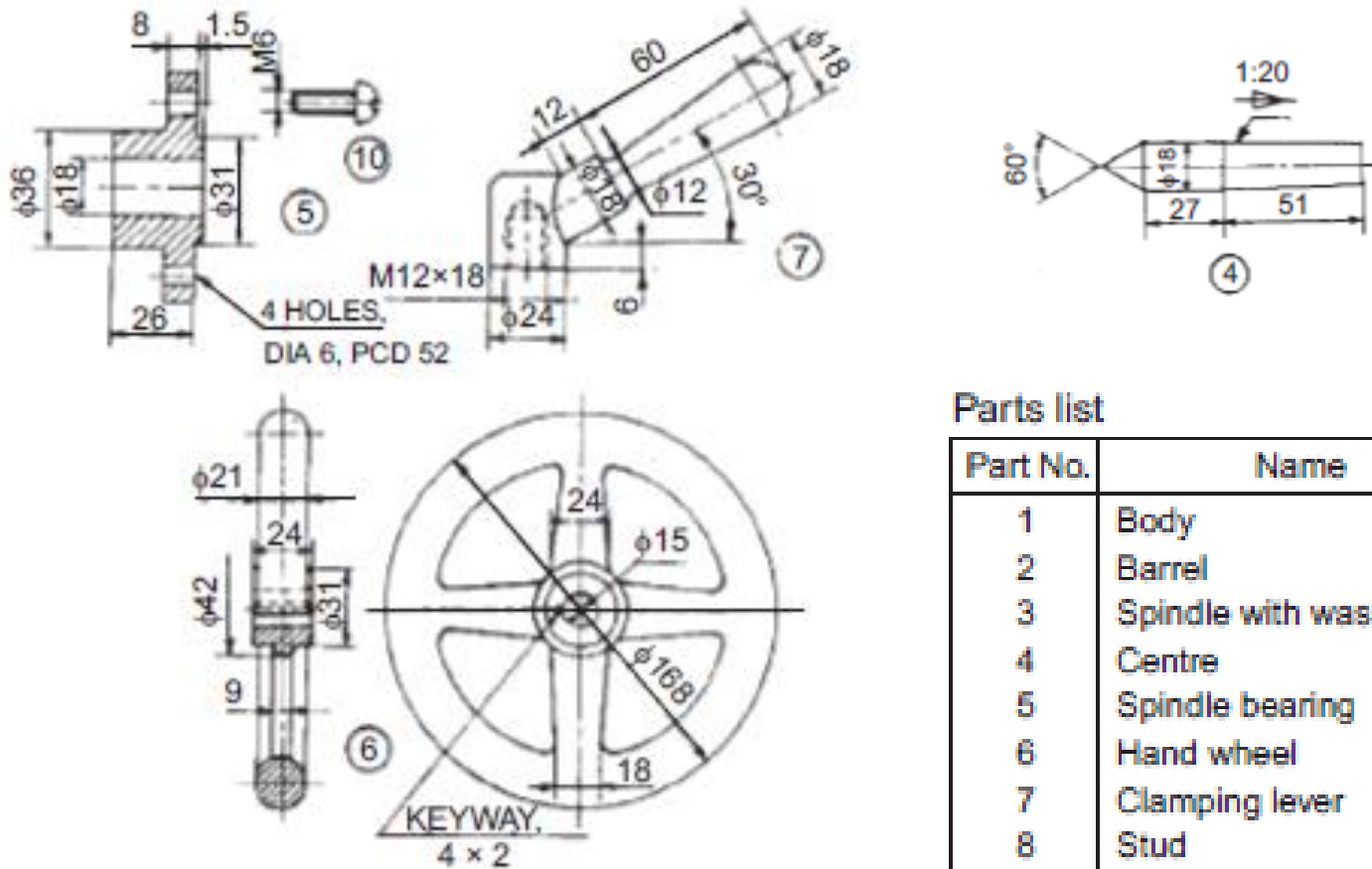
# Section C

Assembly drawing with sectioning and bill of materials from given detailed drawings of assemblies: Lathe Tail stock, Machine vice, Pedestal bearing

# Details of Lathe Tail Stock



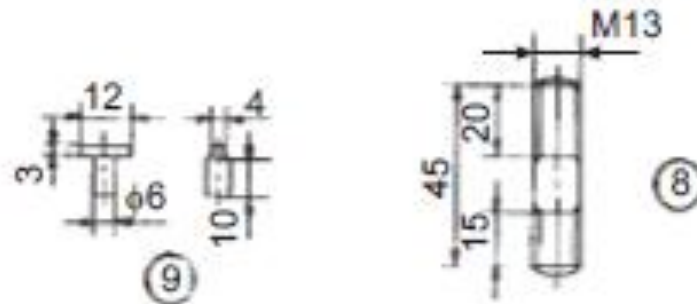
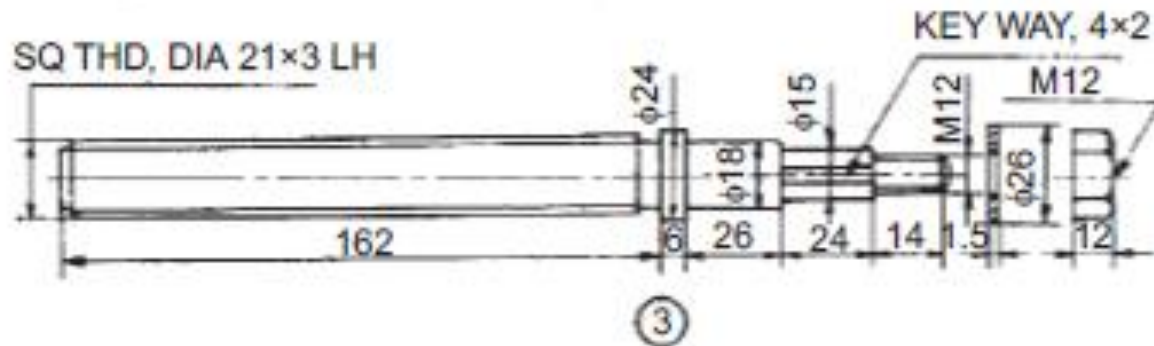
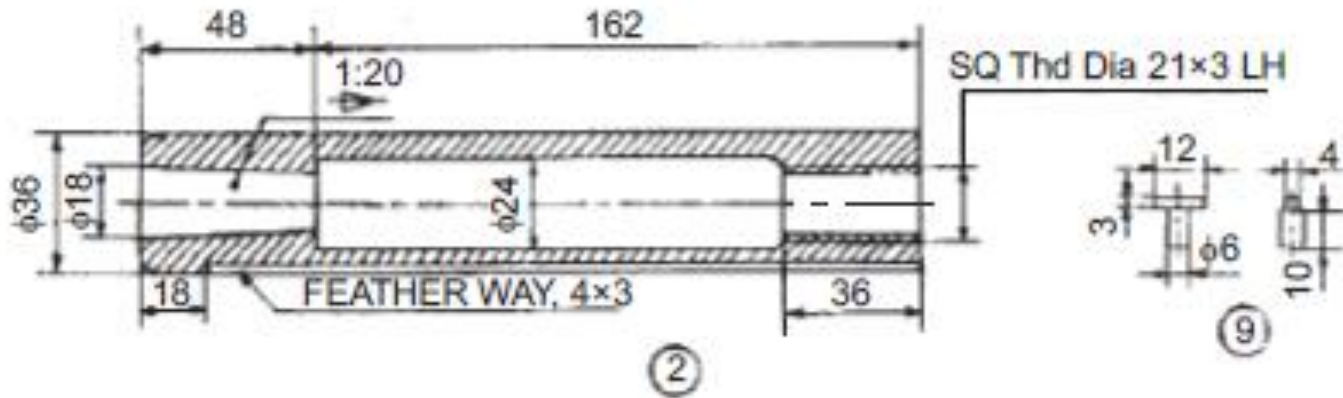
# Details of Lathe Tail Stock



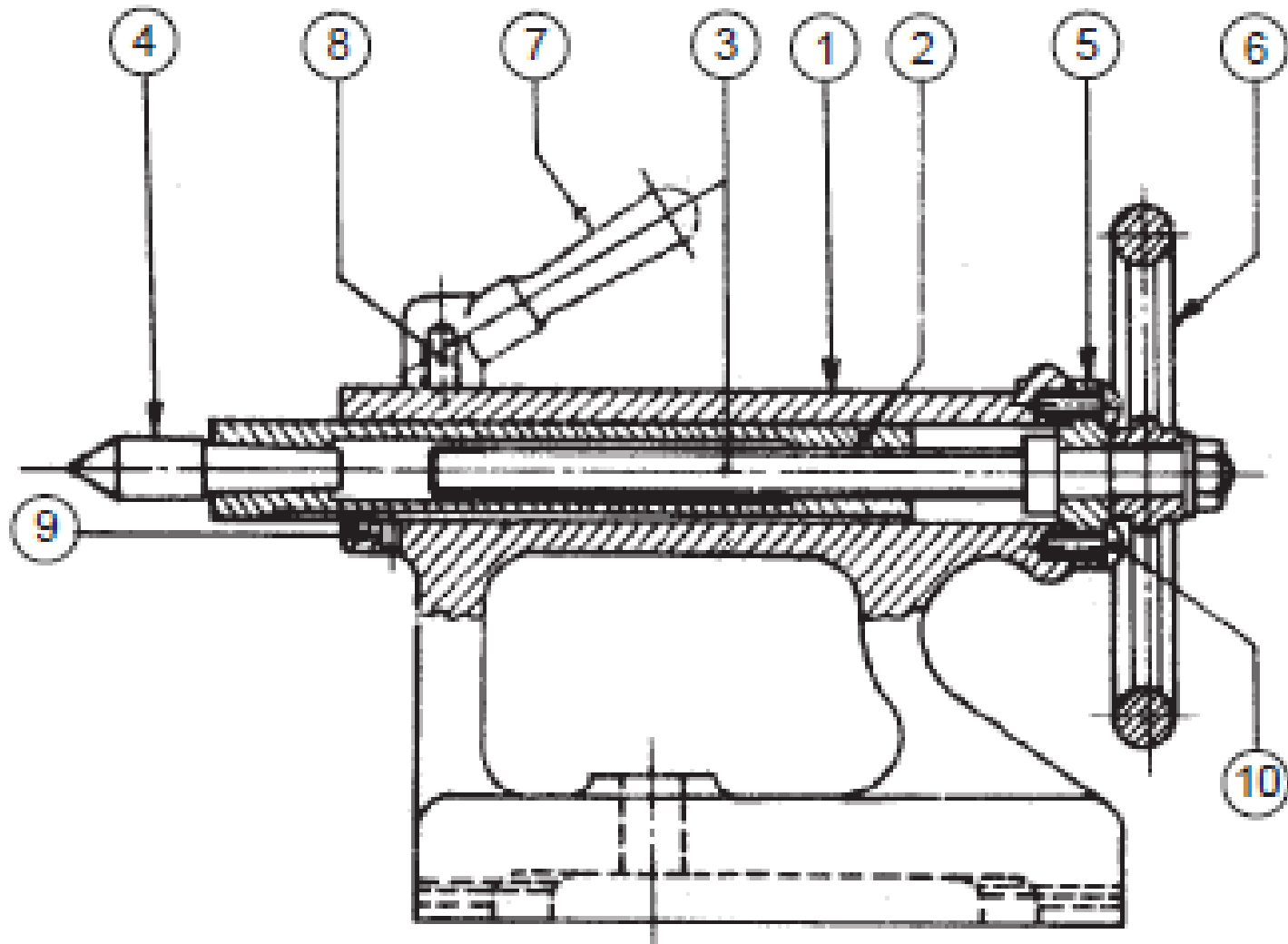
## Parts list

Part No.	Name	Matl	Qty
1	Body	CI	1
2	Barrel	MS	1
3	Spindle with washer & nut	MS	1
4	Centre	CS	1
5	Spindle bearing	CI	1
6	Hand wheel	CI	1
7	Clamping lever	MS	1
8	Stud	MS	1
9	Feather key	MS	1
10	Screw	MS	4

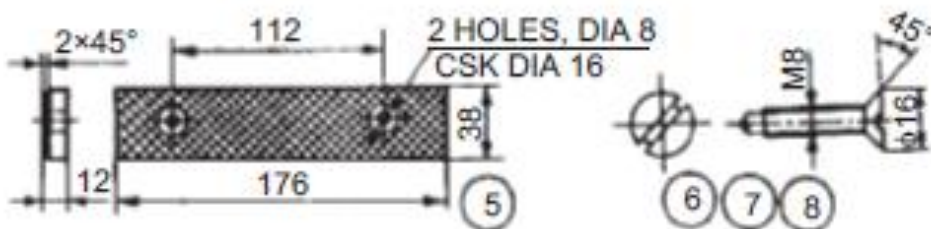
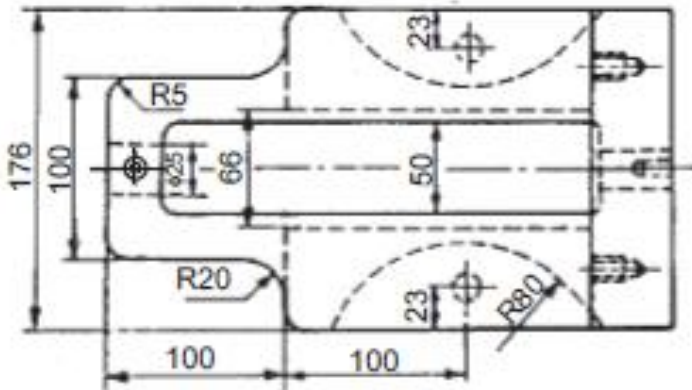
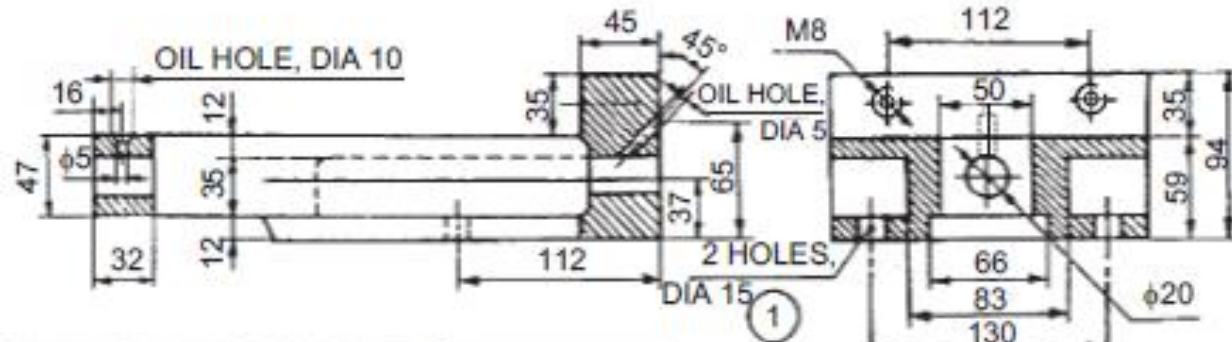
# Details of Lathe Tail Stock



# Assembly of Lathe Tail Stock



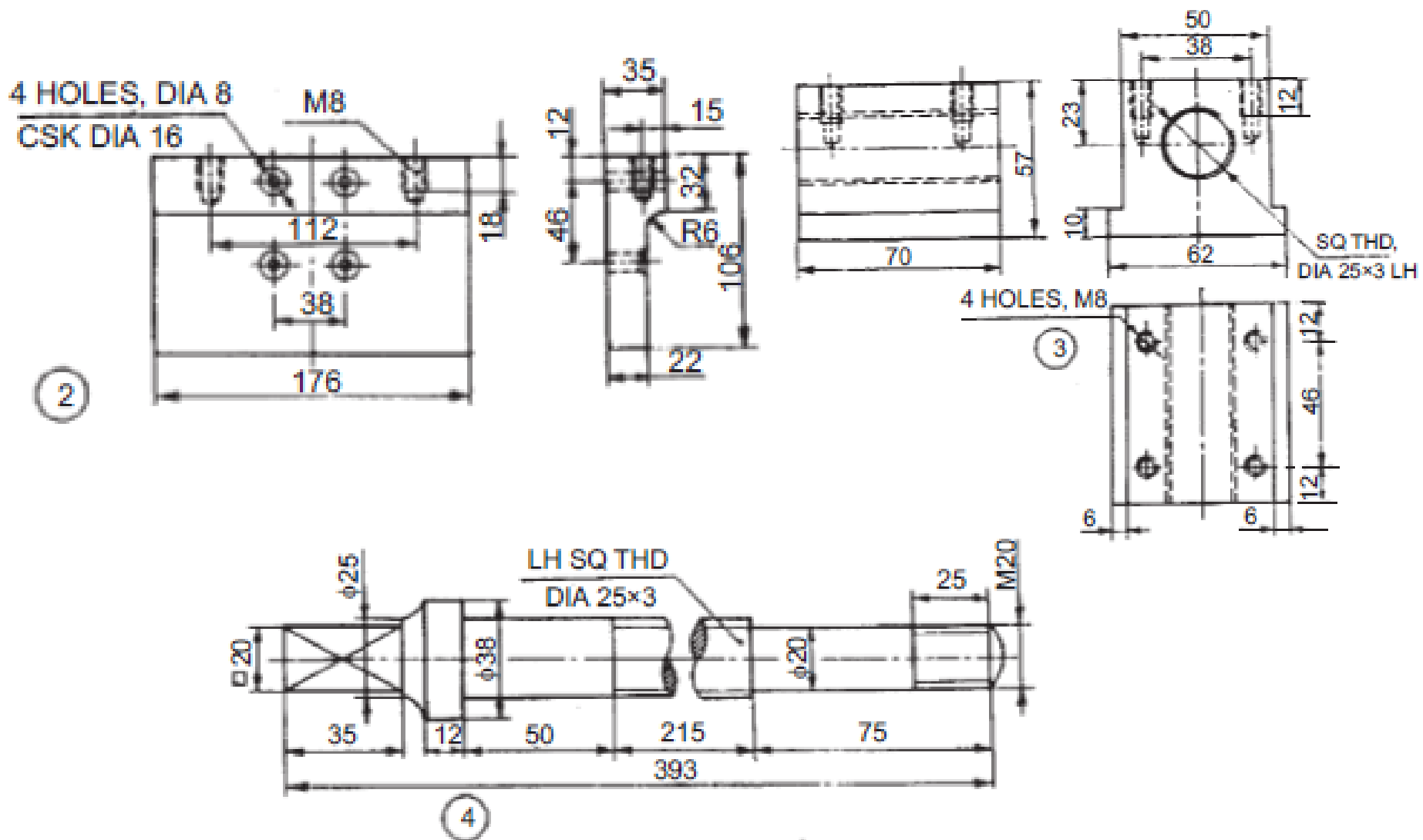
# Details of Machine Vice



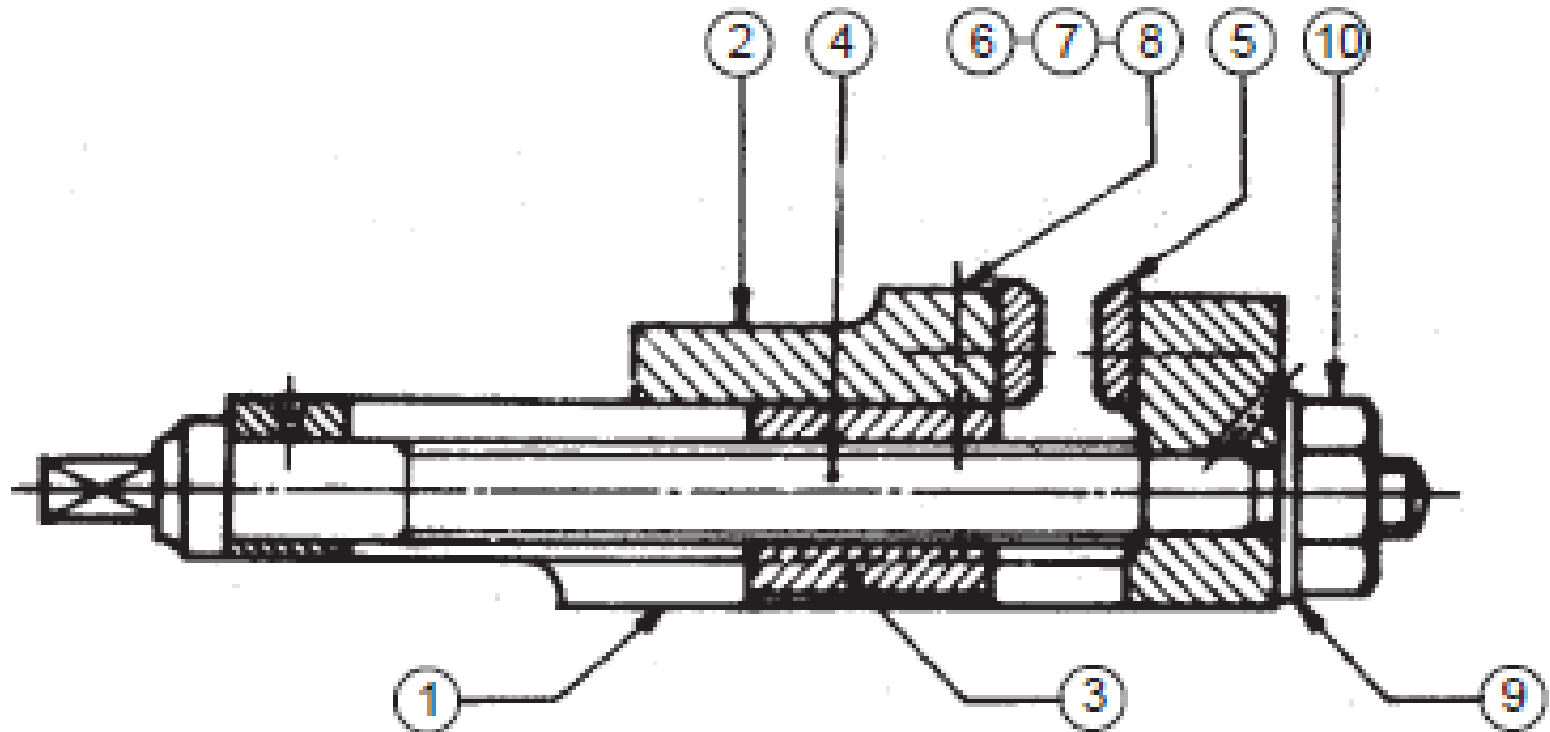
## Parts list

Part No.	Name	Matl	Qty
1	Base	CI	1
2	Movable jaw	CI	1
3	Sliding block	CI	1
4	Guide screw	MS	1
5	Serrated plate	MS	2
6	CSK Screw 34 long	MS	4
7	CSK Screw 30 long	MS	2
8	CSK Screw 50 long	MS	2
9	Washer $\phi 20 \times 6$	MS	1
10	Nut M20	MS	1

# Details of Machine Vice

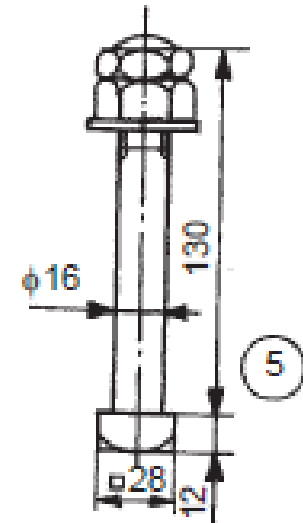
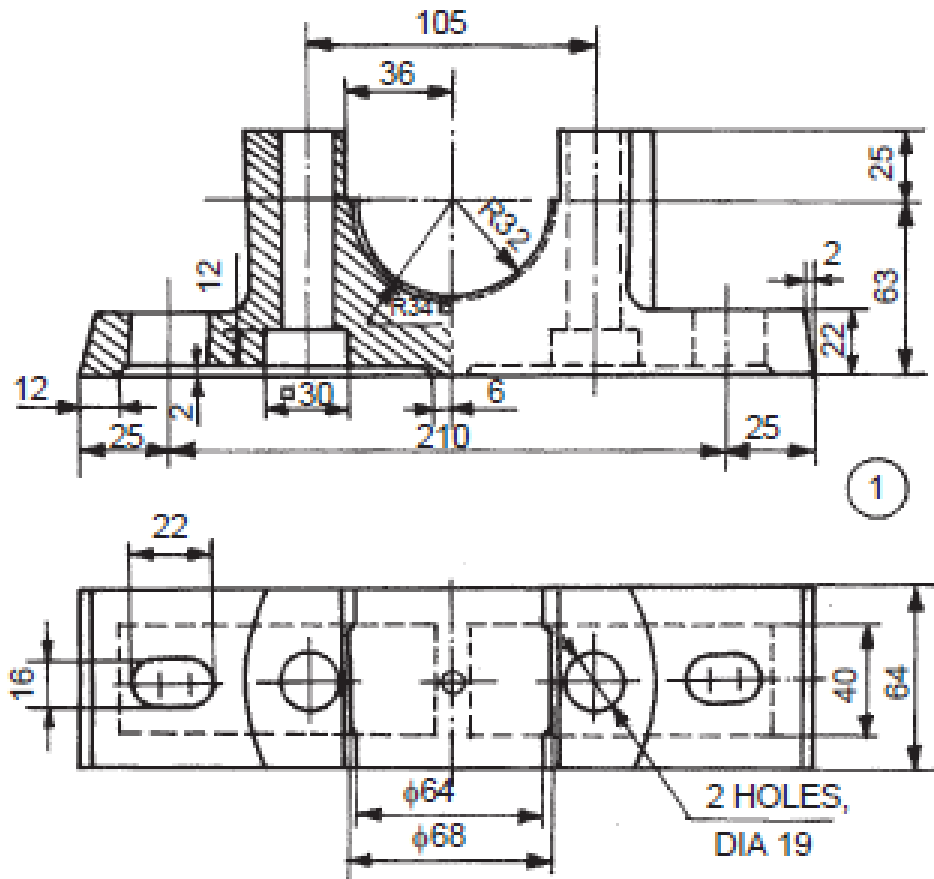


# Assembly of Machine Vice





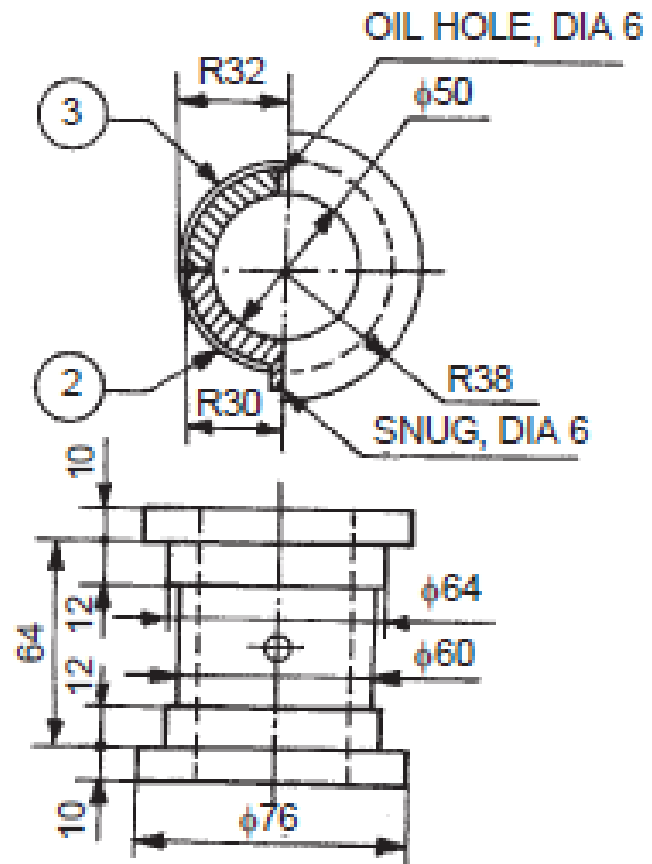
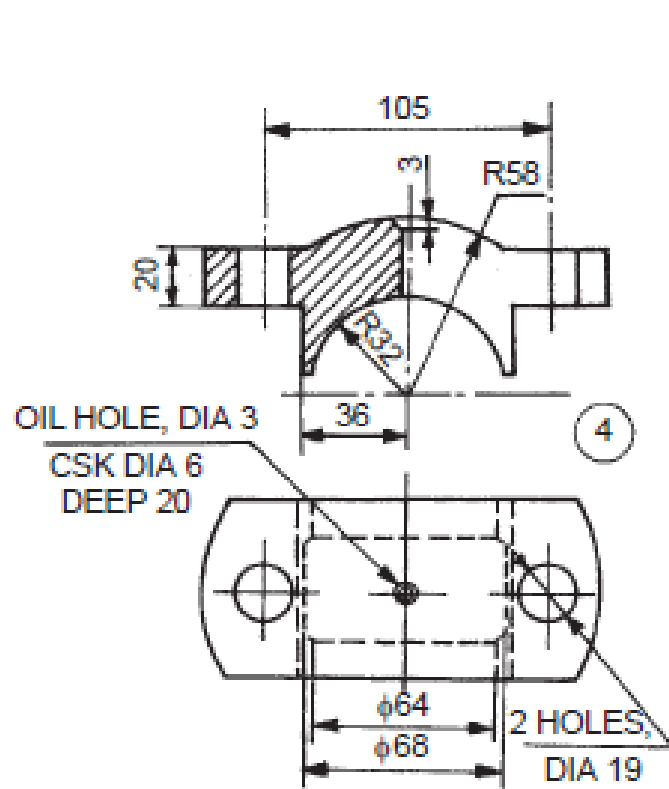
# Details of Pedestal Bearing (Plummer Block)



## Parts list

Sl. No.	Name	Matl.	Qty.
1	Base	CI	1
2	Bearing brass	Bronze	1
3	Bearing brass	Bronze	1
4	Cap	CI	1
5	Bolt with nuts	MS	2

# Details of Pedestal Bearing (Plummer Block)



# Assembly of Pedestal Bearing (Plummer Block)

