

Internet Fundamentals

Lecture-24

Outline

- 6.1 Introduction
- 6.2 Microsoft FrontPage Express
- 6.3 Text Styles
- 6.4 Images and Links
- 6.5 Symbols and Lines
- 6.6 Tables
- 6.7 Forms
- 6.8 Marquees and Scripts

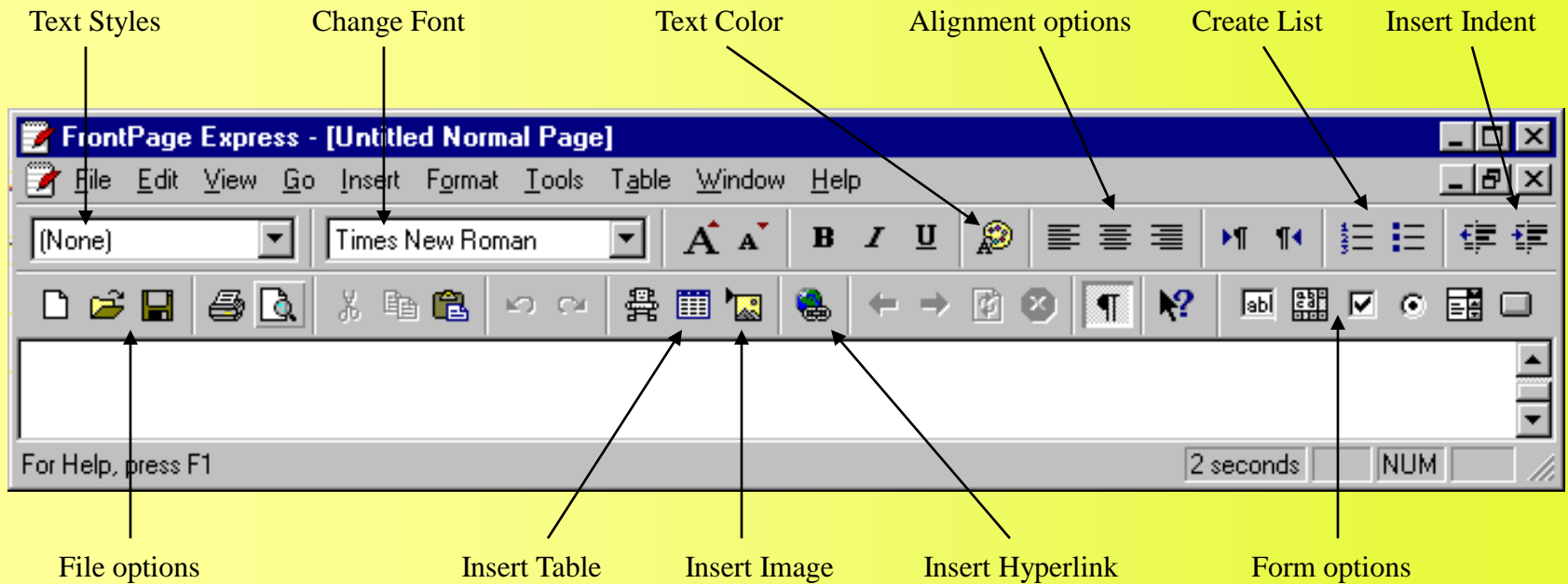
6.1 Introduction

- Graphics-based HTML editing programs
 - Should only be used as aids
 - Often disrupt indentation
 - Often insert unnecessary tags
 - No substitute for in-depth knowledge of HTML
- Microsoft FrontPage Express
 - Insert text and font changes
 - Create tables, forms, frames, etc.

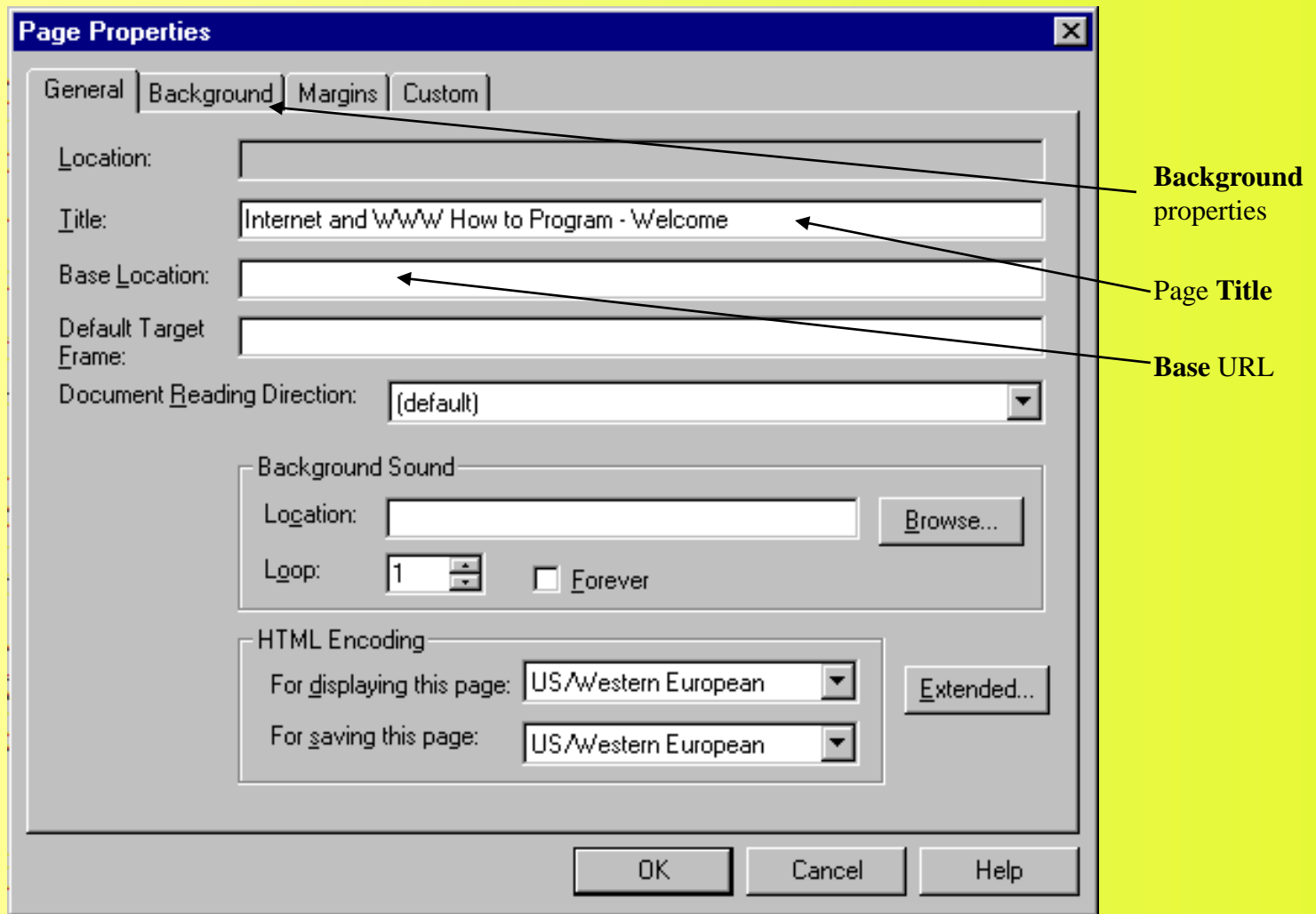
6.2 Microsoft FrontPage Express

- WYSIWYG display
 - What You See Is What You Get
 - Renders HTML elements exactly as a browser would
- To view or edit HTML directly
 - **View** menu → **HTML...**
 - Color coded HTML
 - Can be turned off

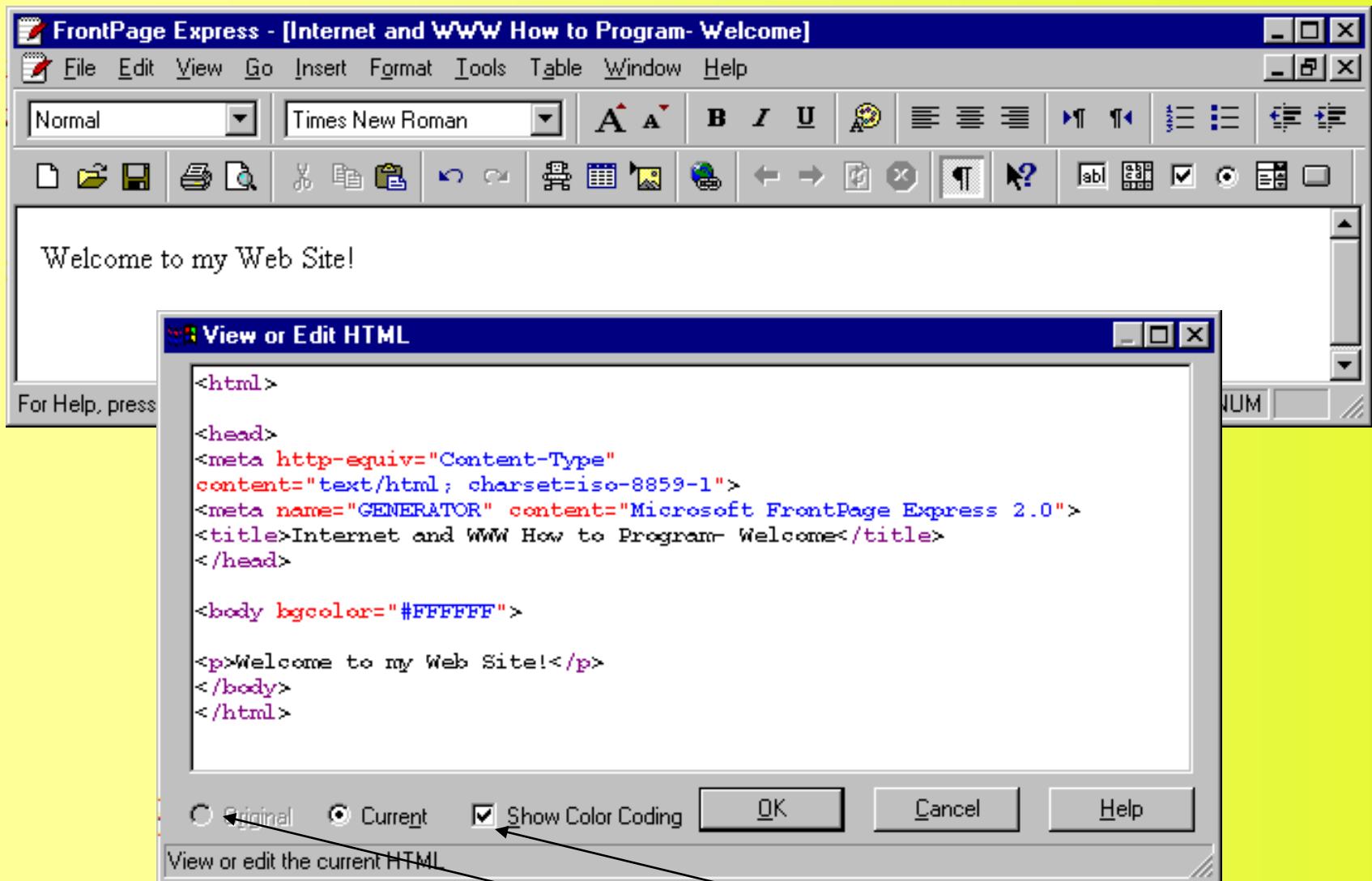
A FrontPage Express window



Setting overall Page Properties



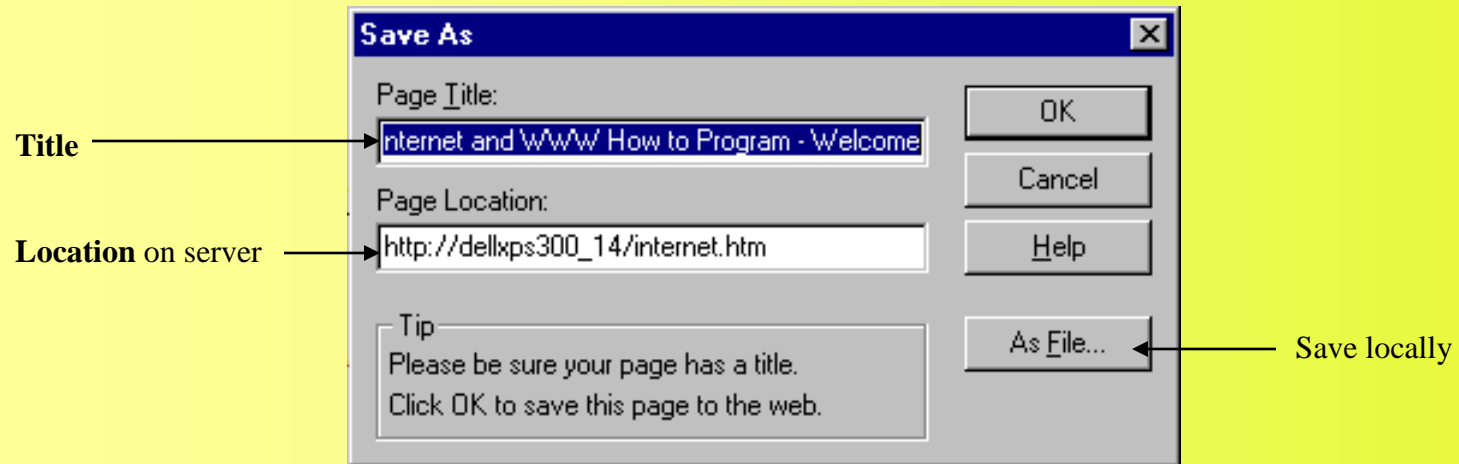
Using FrontPage Express for an example



Version toggle

Color Coding checkbox

Saving your HTML file



6.3 Text Styles

- Drop-down menu for changing text styles
 - Header tags
 - List tags
 - Alignment
- Text
 - Increase/decrease size
 - Color
- FrontPage Express
 - Prone to producing inefficient code

6.3 Text Styles

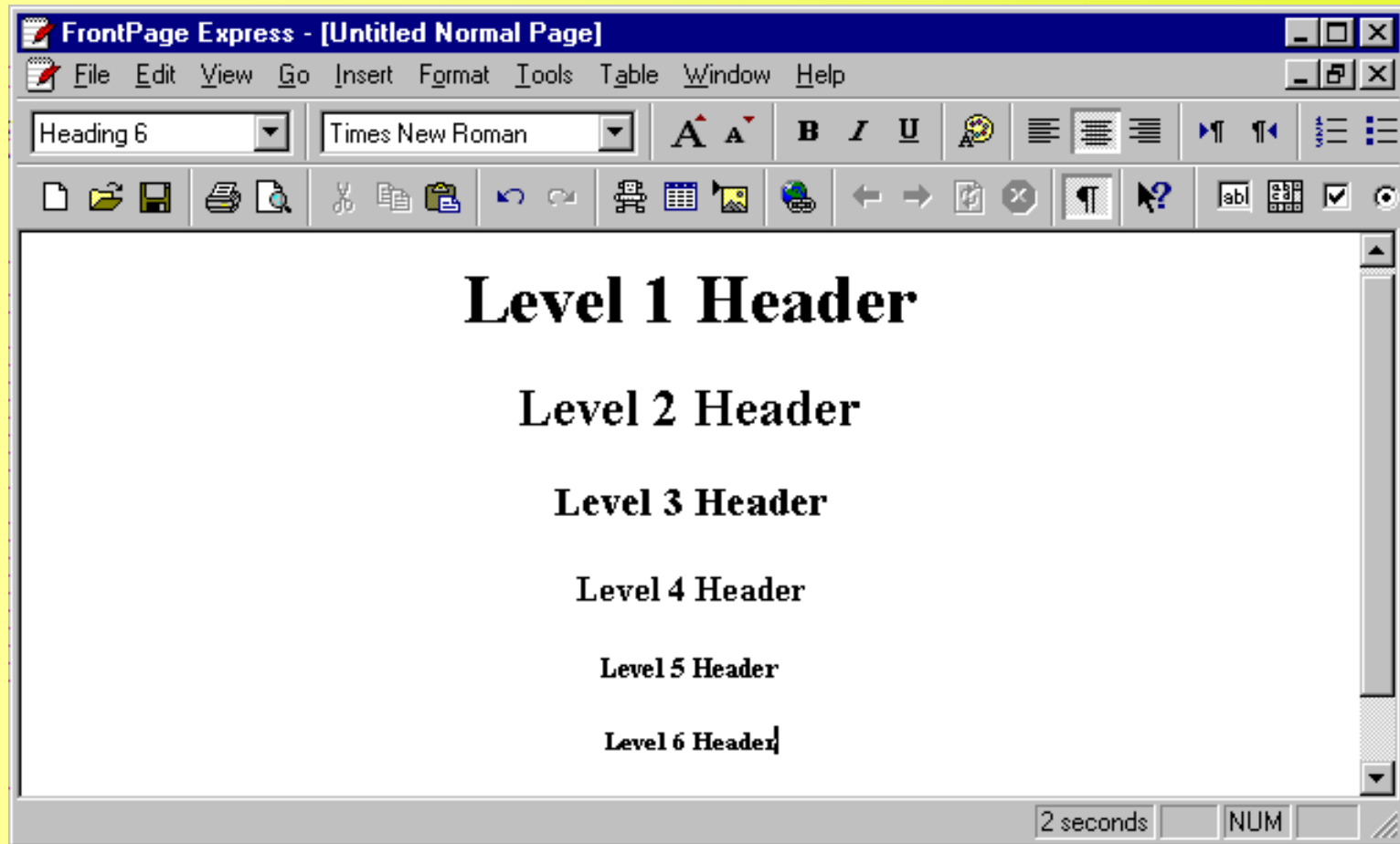
- **Font** dialog box
 - Highlight text
 - Select **Font...** from **Format** menu, or
 - Right-click text
- *Enter*
 - **<P>...</P>**
- *Shift + Enter*
 - **
**
- Definition list
 - **<DT>** - defined term
 - **<DD>** - definition

```
1 <html>
2 <head>
3
4 <meta http-equiv="Content-Type"
5 content="text/html; charset=iso-8859-1">
6 <meta name="GENERATOR" content="Microsoft FrontPage Express 2.0">
7 <title>Untitled Normal Page</title>
8 </head>
9
10 <body bgcolor="#FFFFFF">
11
12 <h1 align="center">Level 1 Header</h1>
13
14 <h2 align="center">Level 2 Header</h2>
15
16 <h3 align="center">Level 3 Header</h3>
17
18 <h4 align="center">Level 4 Header</h4>
19
20 <h5 align="center">Level 5 Header</h5>
21
22 <h6 align="center">Level 6 Header</h6>
23 </body>
24 </html>
```

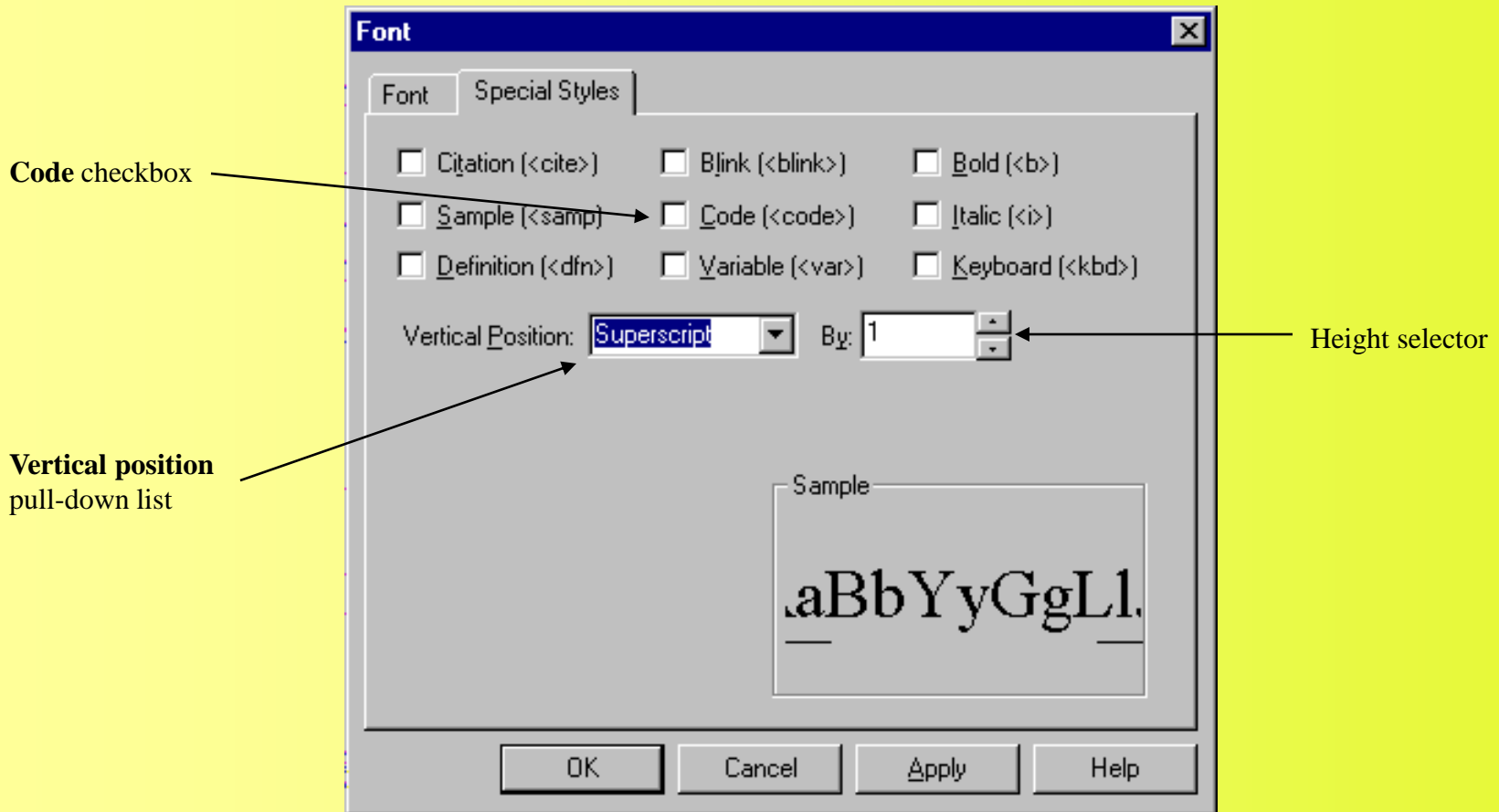
Inefficient coding

1. Resulting HTML produced by FrontPage Express after applying headers

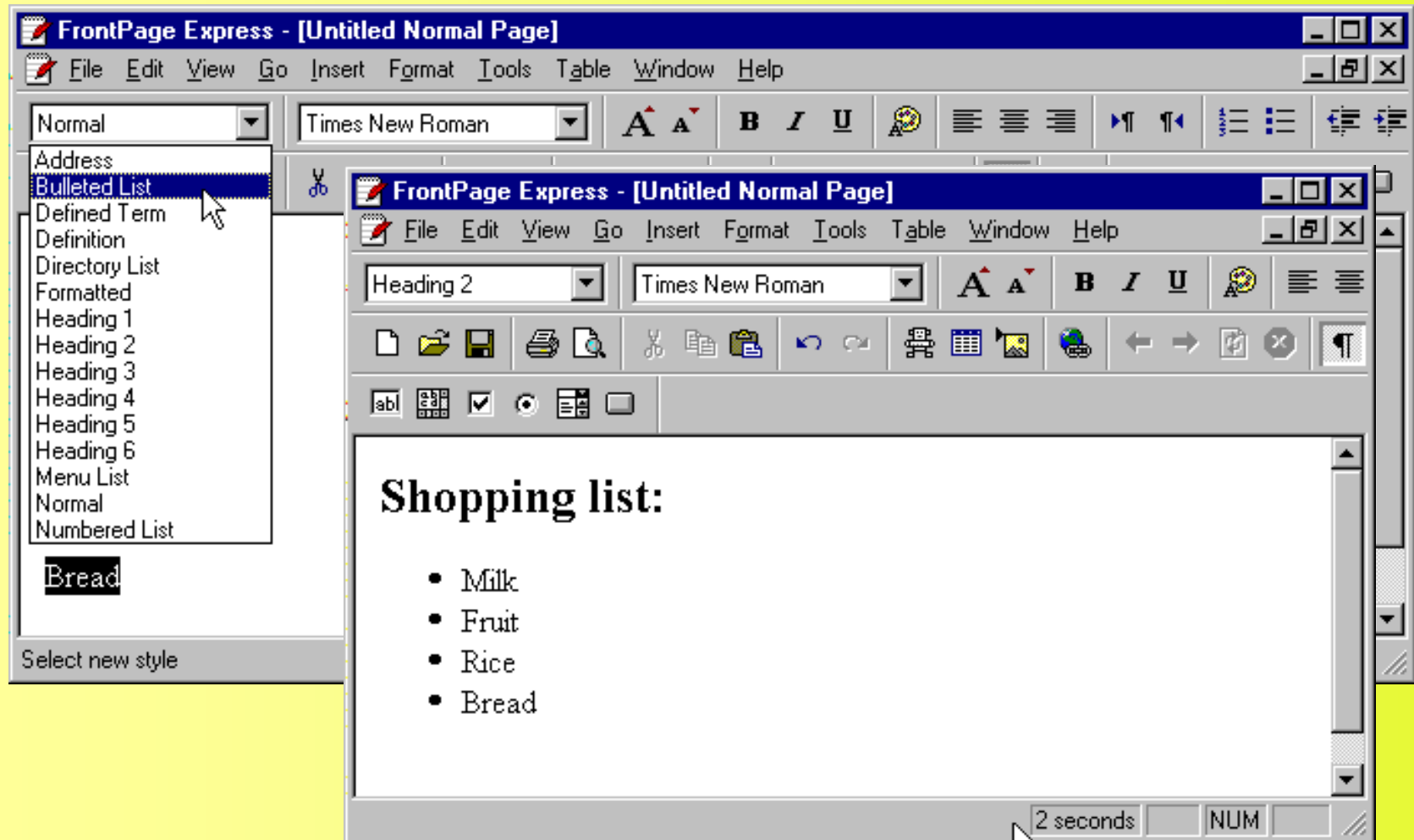
Applying header tags and centering using FrontPage Express



Changing Font settings and adding special styles



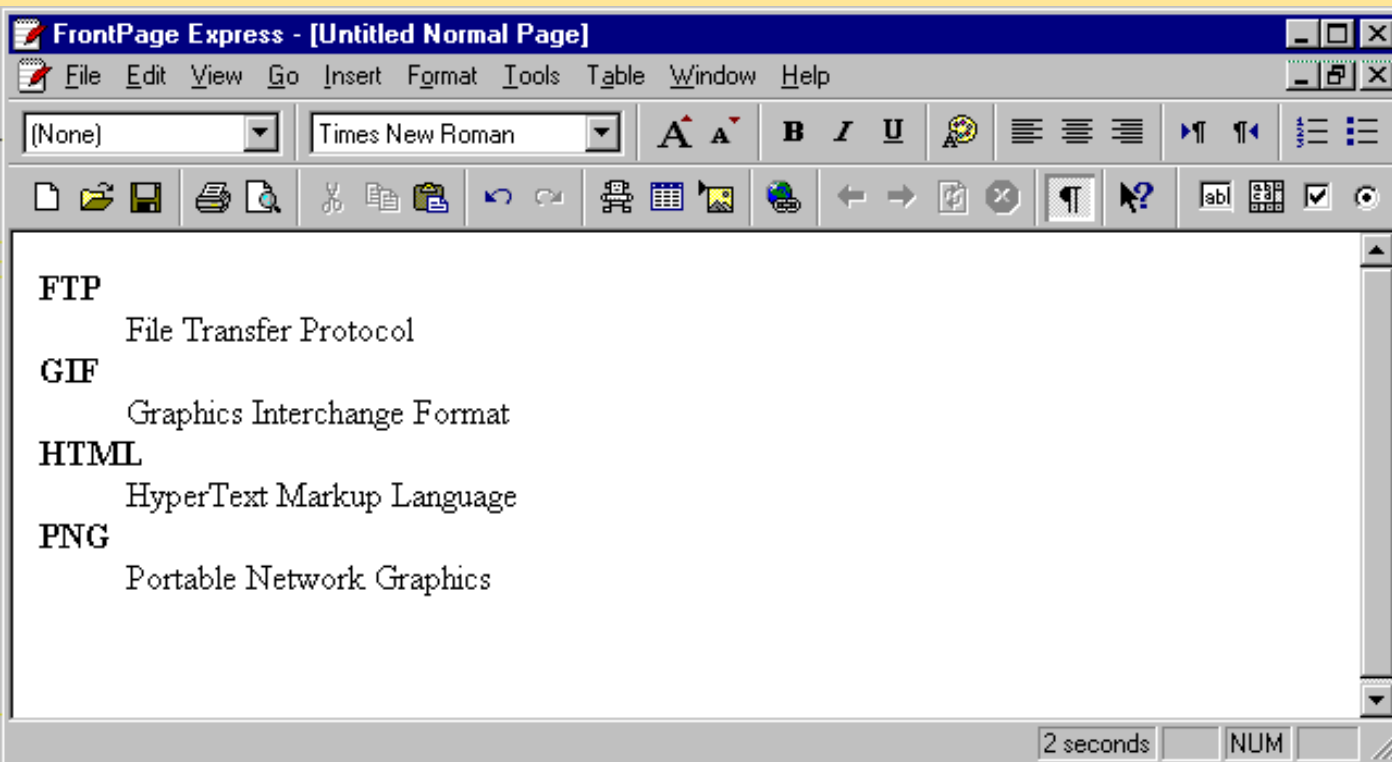
Applying an unordered list and a header to text



```
1 <d1>
2   <dt><strong>FTP</strong></dt>
3   <dd>File Transfer Protocol</dd>
4   <dt><strong>GIF</strong></dt>
5   <dd>Graphics Interchange Format</dd>
6   <dt><strong>HTML</strong></dt>
7   <dd>HyperText Markup Language</dd>
8   <dt><strong>PNG</strong></dt>
9   <dd>Portable Network Graphics</dd>
10 </d1>
```

1. **HTML code produced by FrontPage Express after applying definition list**

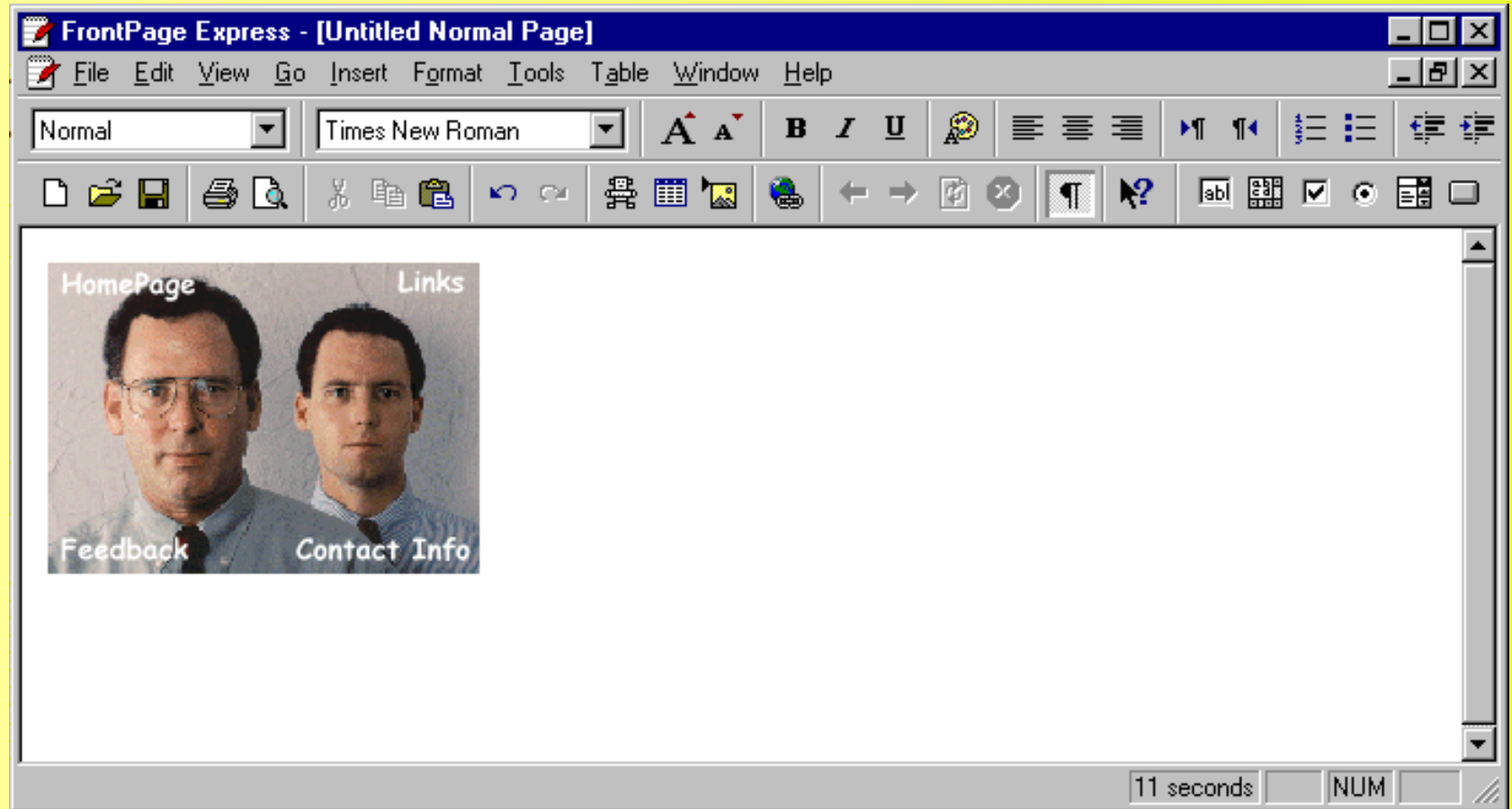
2. **Page rendered**



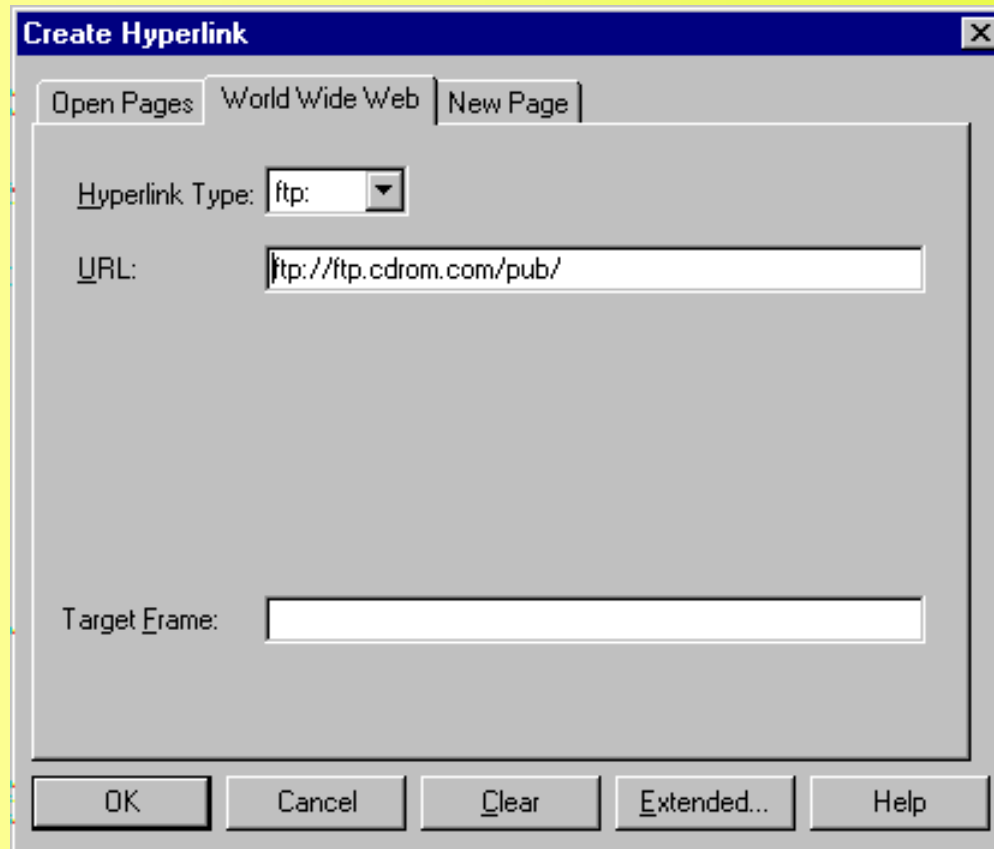
6.4 Images and Links

- **Insert** menu → **Image...**
 - **Browse...** hard drive
 - FrontPage Express sets absolute path
 - **C:/images/deitel.gif**
 - Need relative path for Web
 - » **images/deitel.gif**
 - Select **From Location** to use image from Web
 - **Hyperlinks**
 - Insert menu → **Hyperlink...**
 - **http, mailto, https** (Secure HyperText Transfer Protocol), etc.

Inserting an image into a Web page

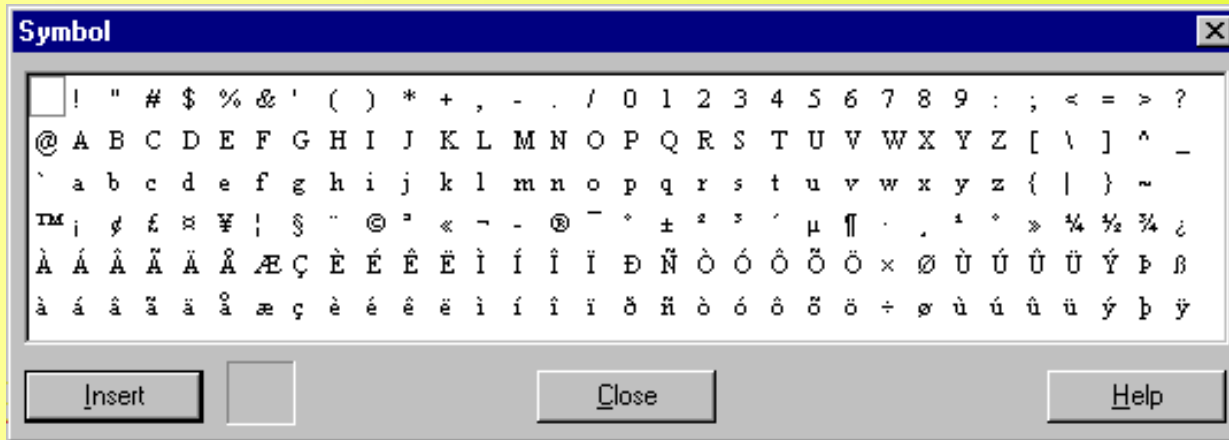


Inserting a Hyperlink in a Web page



6.5 Symbols and Lines

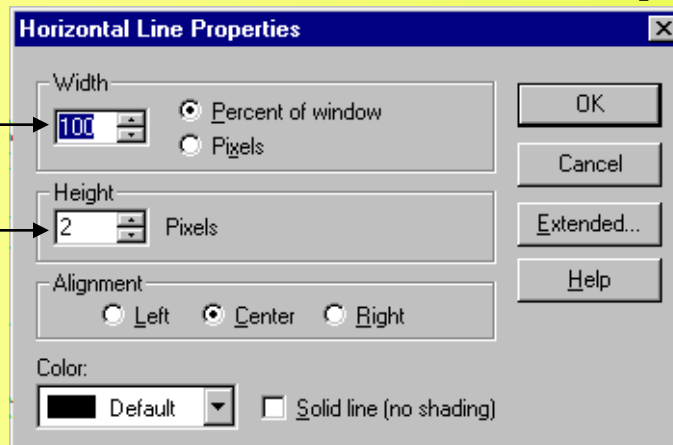
- **Insert** menu → **Symbol...**



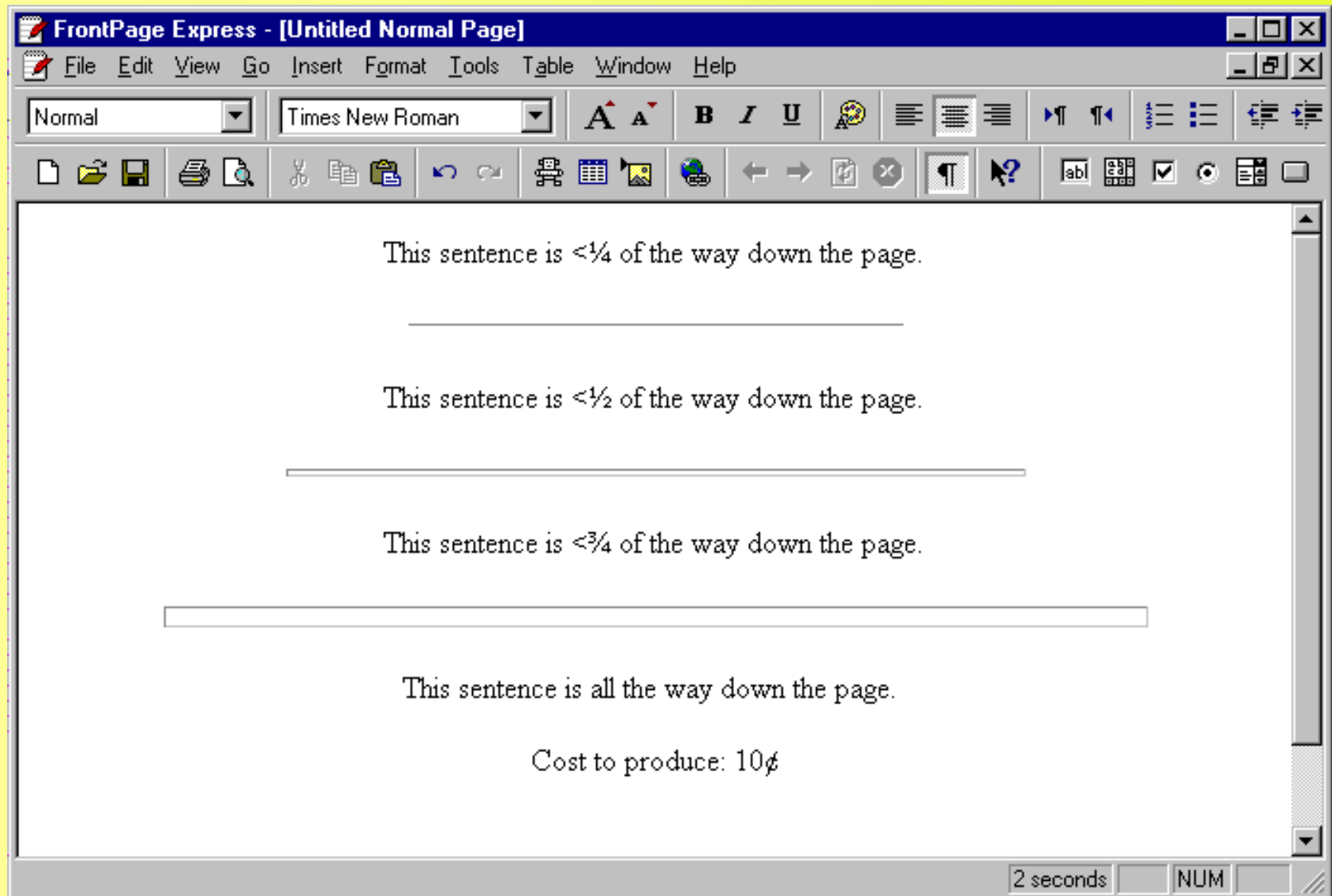
- **Insert** menu → **Horizontal Line**
 - Right-click line → **Horizontal Line Properties...**

Edit the **width**

Edit the **height**



Demonstrating symbols and horizontal lines on one page

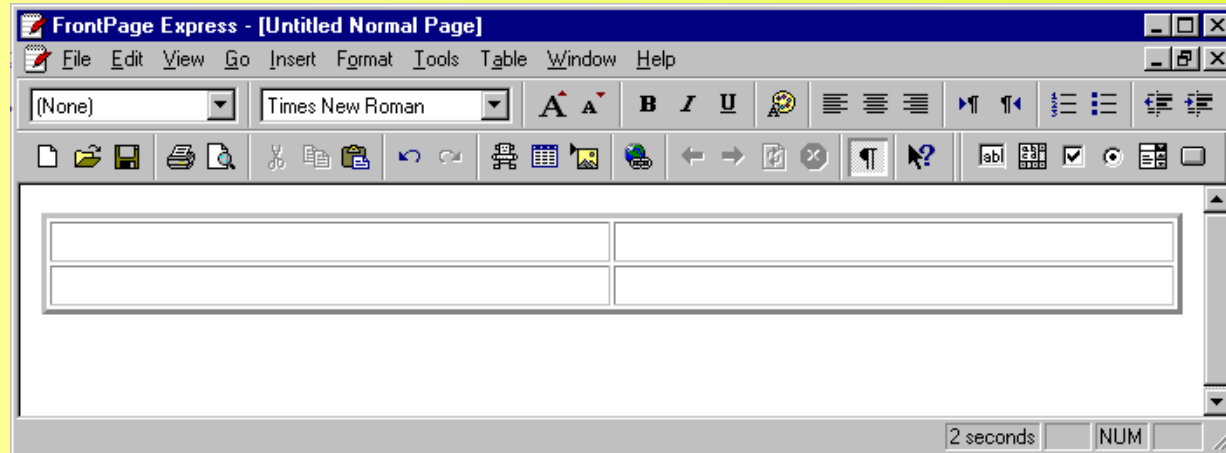


6.6 Tables

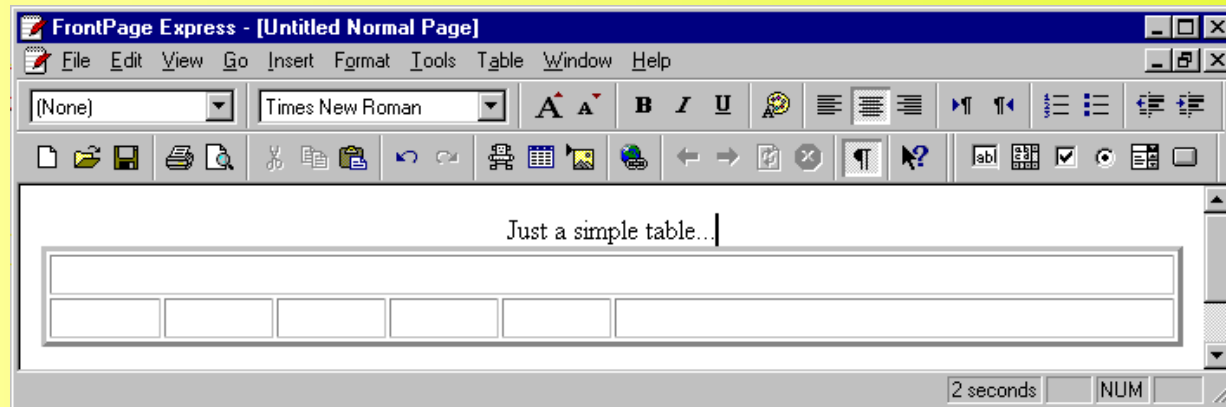
- Hard to code tables in HTML
 - FrontPage Express makes it easier
- **Table** menu → **Insert Table...**
 - Select number rows and columns
 - *Delete* to remove a cell
 - **Merge Cells...**
 - **Split Cells...**
 - **Insert Caption**
 - **Table Properties...**
 - **Cell Properties...**

Example Tables

- A default table



- A basic table



Adjusting table colors and alignment in Table Properties

The image shows a screenshot of the 'Table Properties' dialog box. The dialog is divided into several sections:

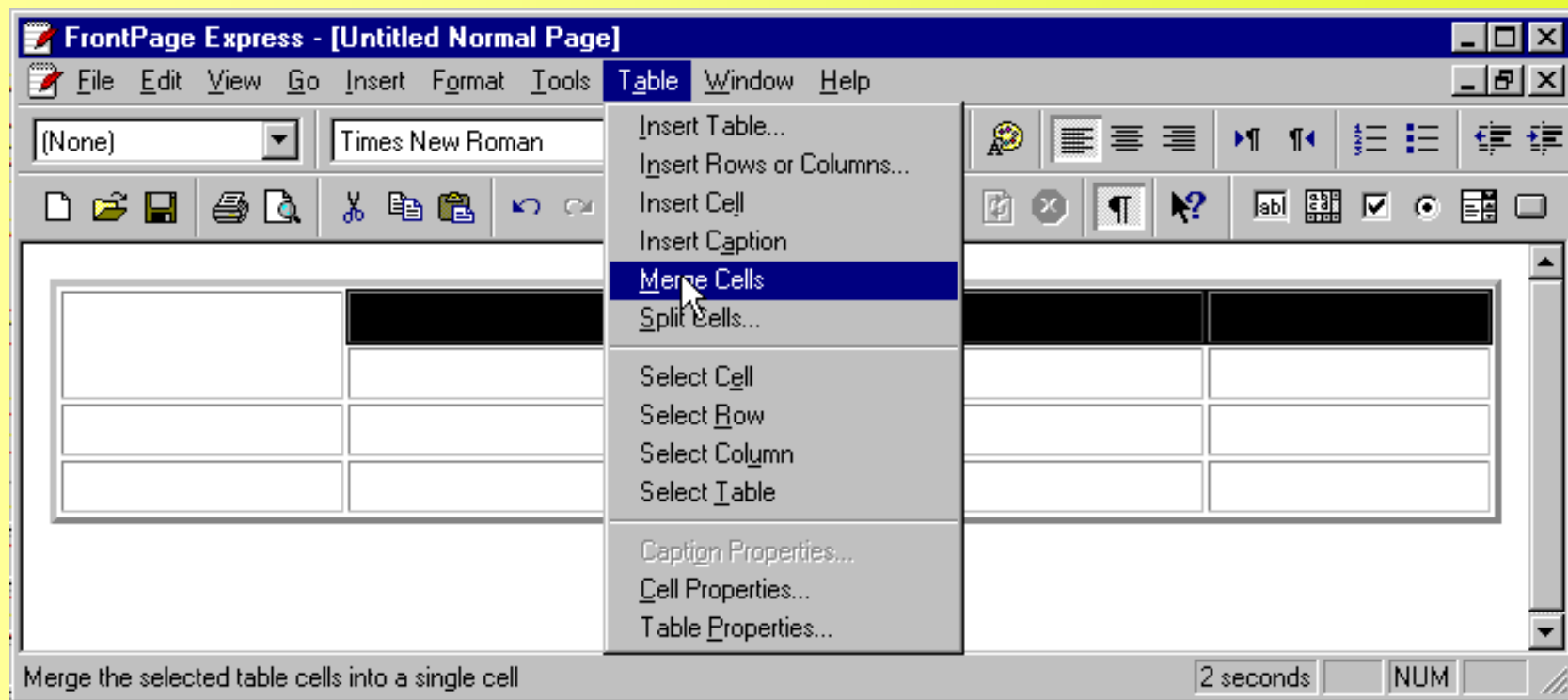
- Layout:** Contains 'Alignment' (set to Center), 'Border Size' (1), 'Cell Padding' (1), and 'Cell Spacing' (2).
- Minimum Width:** Contains a checked 'Specify Width' checkbox, a text box with '85', and radio buttons for 'in Pixels' and 'in Percent' (selected).
- Custom Background:** Contains a 'Use Background Image' checkbox (unchecked), a text box, 'Browse...' and 'Properties...' buttons, and a 'Background Color' dropdown (set to Default).
- Custom Colors:** Contains three dropdowns: 'Border' (set to Green), 'Light Border' (set to Default), and 'Dark Border' (set to Default).

Annotations with arrows point to specific elements:

- 'Table alignment and formatting' points to the 'Alignment' dropdown.
- 'Table Background' points to the 'Use Background Image' checkbox.
- 'Table colors' points to the 'Border' dropdown.
- 'Table width' points to the 'Specify Width' checkbox and the '85' text box.

Buttons on the right side include 'OK', 'Cancel', 'Apply', 'Extended...', and 'Help'.

A 4x5 table with the top left cell expanded



An almost completed table

FrontPage Express - [Untitled Normal Page]

File Edit View Go Insert Format Tools Table Window Help

Heading 1 Times New Roman

HomePage Links

Feedback Contact Info

Camelid comparison

Approximate as of 8/99

	# of Humps	Indigenous region	Spits?	Produces Wool?
Camels (bactrian)	2	Africa/Asia	Llama	Llama
Llamas	1	Andes Mts.		

11 seconds NUM

6.7 Forms

- Text box
 - **One-Line Text Box** button on toolbar, or
 - **One-Line Text Box** in **Form Field** submenu of Insert menu
 - Right-click/double-click for **Form Field Properties...**
- Drop-down menu
 - **Form Field** submenu
- Radio buttons
 - Change group name in **Form Field Properties...**
- **Reset** and **Submit** buttons
 - **Push Button** in Form section on toolbar
- Right-click form
 - **ACTION** and **METHOD** attributes

Adding a new item to a drop-down form menu

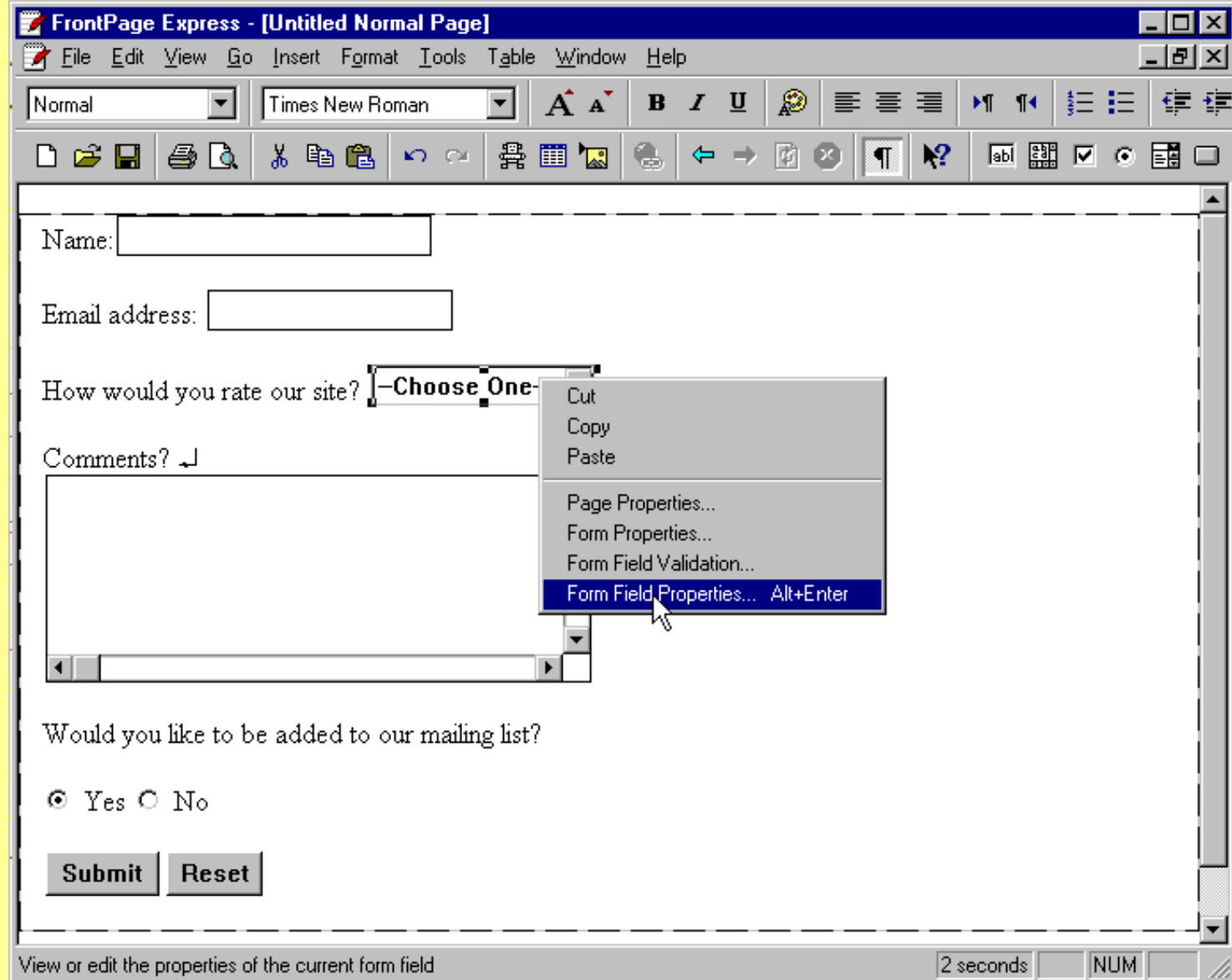
The image shows two overlapping dialog boxes. The background box is titled 'Drop-Down Menu Properties' and contains a 'Name' field with 'D1', a table of menu items, and a set of control buttons. The foreground box is titled 'Add Choice' and contains fields for 'Choice' and 'Specify Value', along with radio buttons for 'Initial State'.

Choice	Selected	Value
Excellent	No	Excellent
Good	No	Good

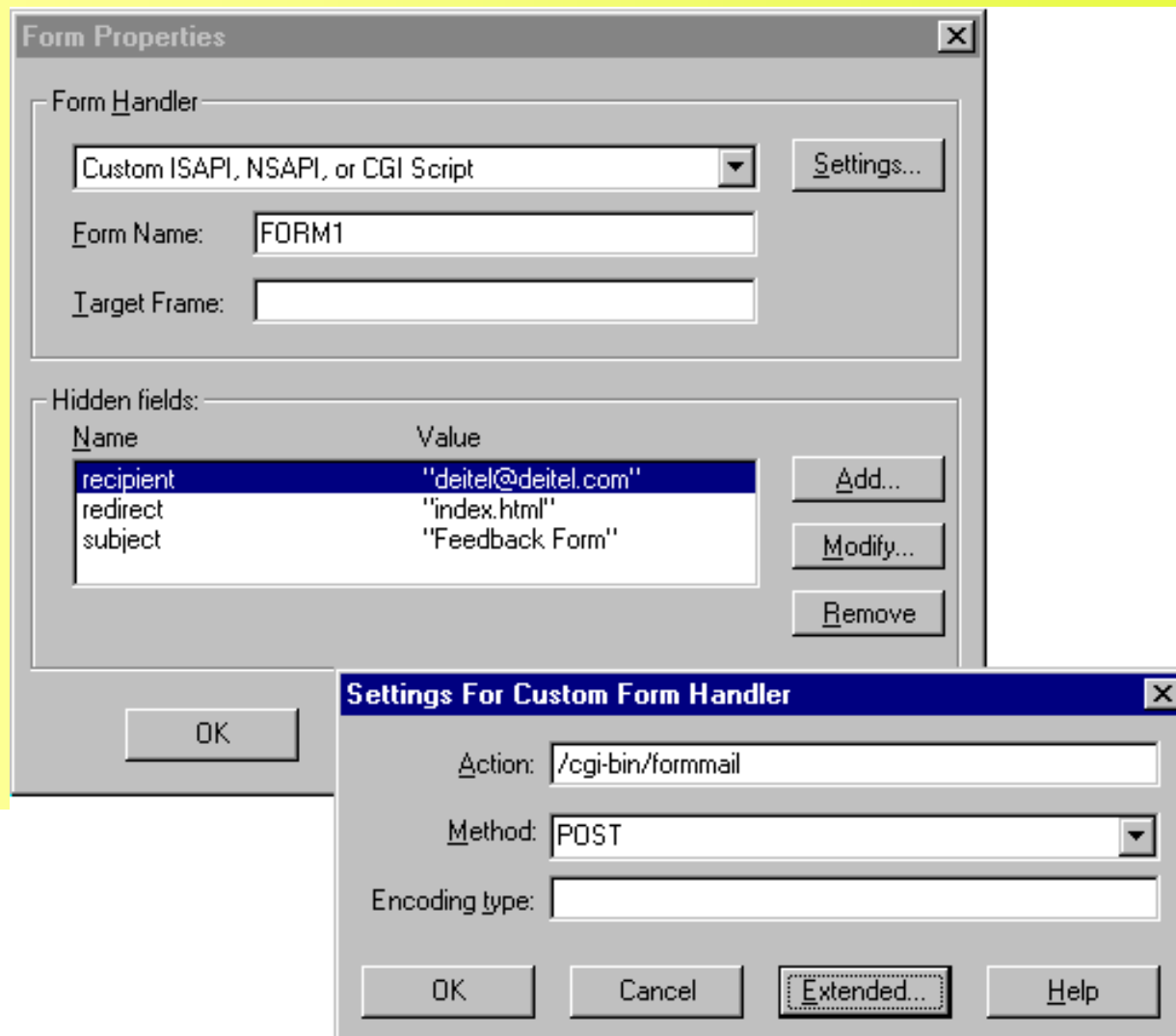
Annotations:

- Choice name:** Points to the 'Choice' text box in the 'Add Choice' dialog.
- Choice value:** Points to the 'Specify Value' text box in the 'Add Choice' dialog.
- Default value toggle:** Points to the 'Not selected' radio button in the 'Add Choice' dialog.
- Add new menu items:** Points to the 'Add...' button in the 'Drop-Down Menu Properties' dialog.
- Modify new menu items:** Points to the 'Modify...' button in the 'Drop-Down Menu Properties' dialog.
- Remove new menu items:** Points to the 'Remove' button in the 'Drop-Down Menu Properties' dialog.
- Move items up/down:** Points to the 'Move Up' and 'Move Down' buttons in the 'Drop-Down Menu Properties' dialog.

A brief form for user input



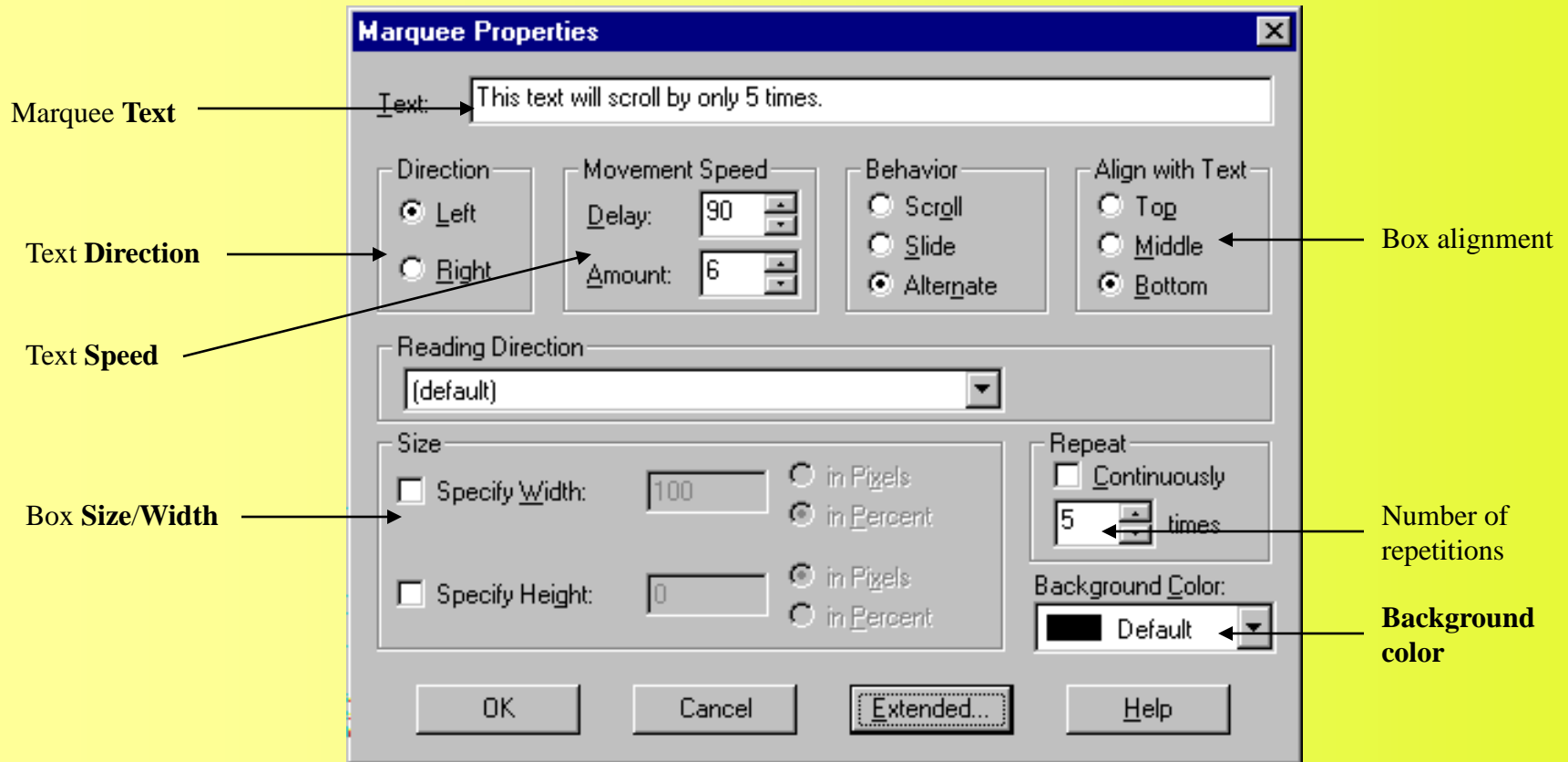
Using the Form Properties dialog box



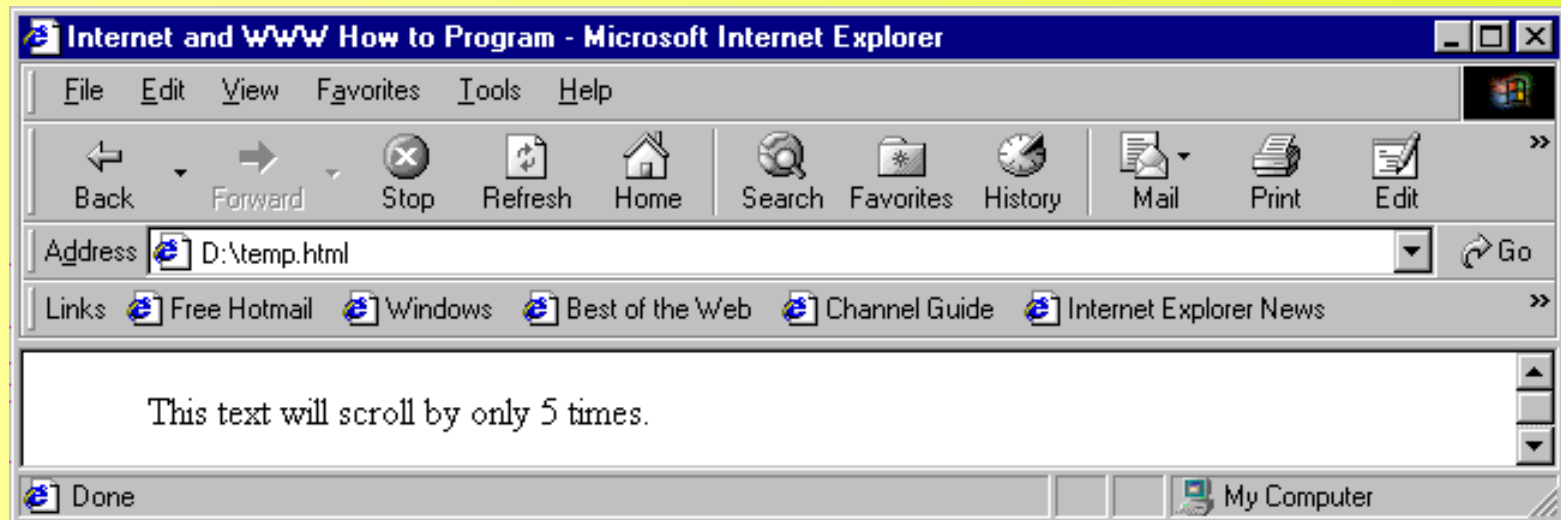
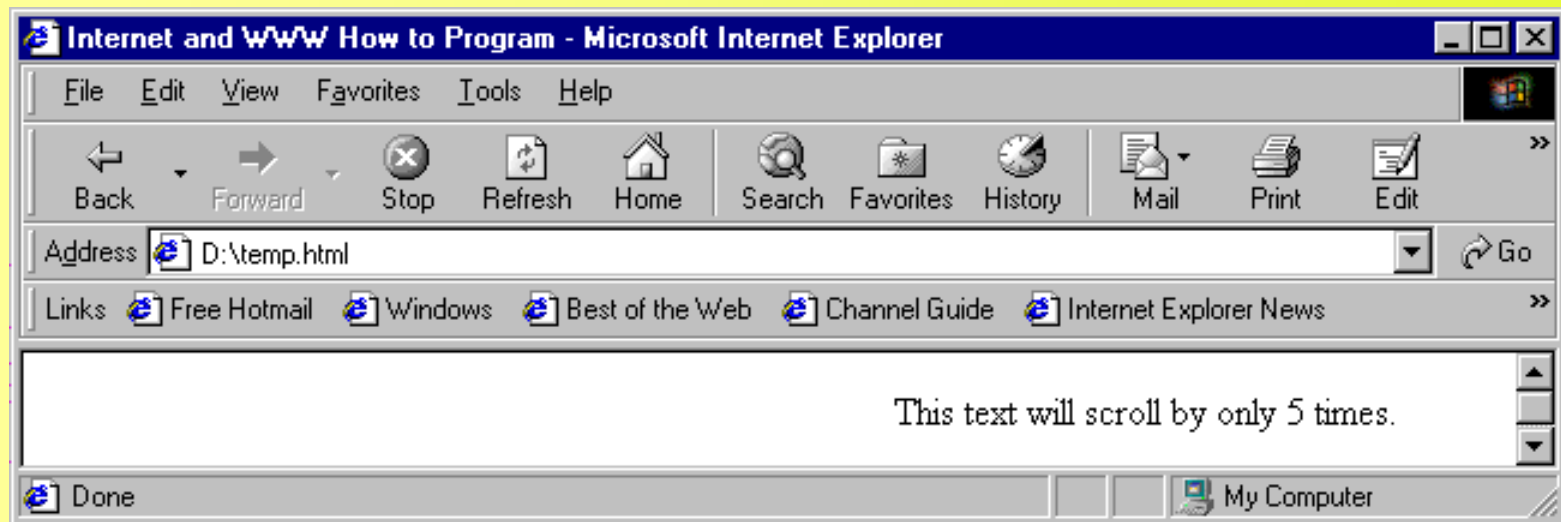
6.8 Marquees and Scripts

- Marquees
 - **<MARQUEE>** tag only supported by Microsoft Internet Explorer
 - Text inside **MARQUEE** element scrolls slowly across screen
 - **Insert** menu → **Marquee...**
 - **Text, Direction, Speed**, etc.
- Scripts
 - Not much support in FrontPage Express
 - **Insert** menu → **Script...**
 - Type in complete script in JavaScript or VBScript

Inserting a <MARQUEE> element for scrolling Web page text



The MARQUEE element in action



Adding a script to the HTML file

